



[Go to Product page](#)

Datasheet for ABIN656113

anti-Syntaxin 16 antibody (C-Term)

2 Images

Overview

Quantity:	400 µL
Target:	Syntaxin 16 (STX16)
Binding Specificity:	AA 247-274, C-Term
Reactivity:	Human
Host:	Rabbit
Clonality:	Polyclonal
Conjugate:	This Syntaxin 16 antibody is un-conjugated
Application:	Western Blotting (WB), Flow Cytometry (FACS)

Product Details

Immunogen:	This STX16 antibody is generated from rabbits immunized with a KLH conjugated synthetic peptide between 247-274 amino acids from the C-terminal region of human STX16.
Clone:	RB32221
Isotype:	Ig Fraction
Predicted Reactivity:	M
Purification:	This antibody is purified through a protein A column, followed by peptide affinity purification.

Target Details

Target:	Syntaxin 16 (STX16)
Alternative Name:	STX16 (STX16 Products)

Target Details

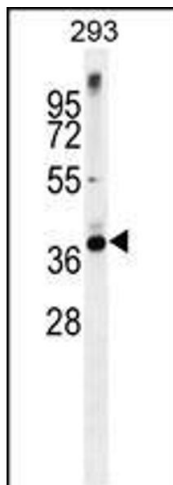
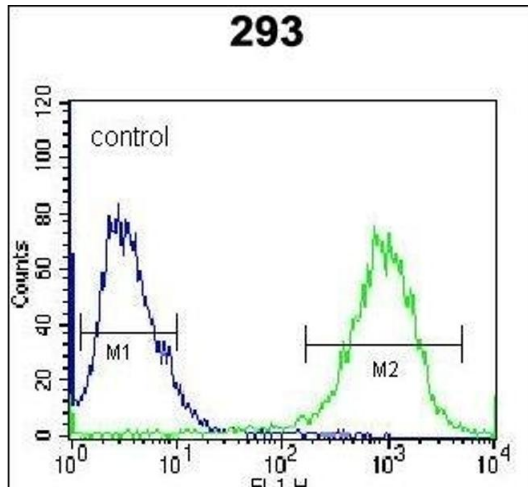
Background:	This gene encodes a protein that is a member of the syntaxin or t-SNARE (target-SNAP receptor) family. These proteins are found on cell membranes and serve as the targets for V-SNARES (vesicle-SNAP receptors) permitting specific synaptic vesicle docking and fusion. A microdeletion in the region of chromosome 20 where this gene is located has been associated with pseudohypoparathyroidism type Ib. Multiple transcript variants encoding different isoforms have been found for this gene.
Molecular Weight:	37031
Gene ID:	8675
NCBI Accession:	NP_001001433 , NP_001128244 , NP_001128245 , NP_001191797 , NP_003754
UniProt:	O14662
Pathways:	Synaptic Vesicle Exocytosis

Application Details

Application Notes:	WB: 1:1000. FC: 1:10~50
Restrictions:	For Research Use only

Handling

Format:	Liquid
Buffer:	Purified polyclonal antibody supplied in PBS with 0.09 % (W/V) sodium azide.
Preservative:	Sodium azide
Precaution of Use:	This product contains Sodium azide: a POISONOUS AND HAZARDOUS SUBSTANCE which should be handled by trained staff only.
Storage:	4 °C,-20 °C
Storage Comment:	Maintain refrigerated at 2-8 °C for up to 6 months. For long term storage store at -20 °C in small aliquots to prevent freeze-thaw cycles.
Expiry Date:	6 months



Flow Cytometry

Image 1. STX16 Antibody (C-term) (ABIN656113 and ABIN2845452) flow cytometric analysis of 293 cells (right histogram) compared to a negative control cell (left histogram). FITC-conjugated goat-anti-rabbit secondary antibodies were used for the analysis.

Western Blotting

Image 2. STX16 Antibody (C-term) (ABIN656113 and ABIN2845452) western blot analysis in 293 cell line lysates (35 µg/lane). This demonstrates the STX16 antibody detected the STX16 protein (arrow).