



[Go to Product page](#)

Datasheet for ABIN656114  
**anti-FOXI1 antibody (AA 224-253)**

1 Image

Overview

Quantity:	400 µL
Target:	FOXI1
Binding Specificity:	AA 224-253
Reactivity:	Human
Host:	Rabbit
Clonality:	Polyclonal
Conjugate:	This FOXI1 antibody is un-conjugated
Application:	Western Blotting (WB)

Product Details

Immunogen:	This FOXI1 antibody is generated from rabbits immunized with a KLH conjugated synthetic peptide between 224-253 amino acids from the Central region of human FOXI1.
Clone:	RB32223
Isotype:	Ig Fraction
Purification:	This antibody is purified through a protein A column, followed by peptide affinity purification.

Target Details

Target:	FOXI1
Alternative Name:	FOXI1 ( <a href="#">FOXI1 Products</a> )
Background:	This gene belongs to the forkhead family of transcription factors which is characterized by a

## Target Details

---

distinct forkhead domain. The specific function of this gene has not yet been determined, however, it is possible that this gene plays an important role in the development of the cochlea and vestibulum, as well as embryogenesis. Mutations in this gene may be associated with the common cavity phenotype. Two transcript variants encoding different isoforms have been found for this gene.

---

Molecular Weight: 40973

---

Gene ID: 2299

---

NCBI Accession: [NP\\_036320](#), [NP\\_658982](#)

---

UniProt: [Q12951](#)

## Application Details

---

---

Application Notes: WB: 1:1000

---

Restrictions: For Research Use only

## Handling

---

---

Format: Liquid

---

Buffer: Purified polyclonal antibody supplied in PBS with 0.09 % (W/V) sodium azide.

---

Preservative: Sodium azide

---

Precaution of Use: This product contains Sodium azide: a POISONOUS AND HAZARDOUS SUBSTANCE which should be handled by trained staff only.

---

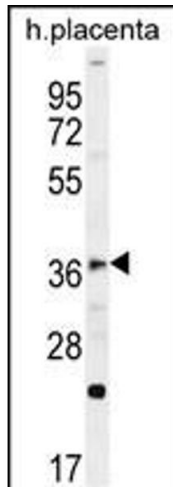
Storage: 4 °C,-20 °C

---

Storage Comment: Maintain refrigerated at 2-8 °C for up to 6 months. For long term storage store at -20 °C in small aliquots to prevent freeze-thaw cycles.

---

Expiry Date: 6 months



### Western Blotting

**Image 1.** FOXI1 Antibody (Center) (ABIN656114 and ABIN2845453) western blot analysis in human placenta tissue lysates (35 µg/lane). This demonstrates the FOXI1 antibody detected the FOXI1 protein (arrow).