

Datasheet for ABIN656121  
**anti-PYGO1 antibody (C-Term)**



[Go to Product page](#)

3 Images

## Overview

Quantity:	400 µL
Target:	PYGO1
Binding Specificity:	AA 382-409, C-Term
Reactivity:	Human
Host:	Rabbit
Clonality:	Polyclonal
Conjugate:	This PYGO1 antibody is un-conjugated
Application:	Western Blotting (WB), Immunofluorescence (IF), Immunohistochemistry (Paraffin-embedded Sections) (IHC (p))

## Product Details

Immunogen:	This PYGO1 antibody is generated from rabbits immunized with a KLH conjugated synthetic peptide between 382-409 amino acids from the C-terminal region of human PYGO1.
Clone:	RB32241
Isotype:	Ig Fraction
Purification:	This antibody is purified through a protein A column, followed by peptide affinity purification.

## Target Details

Target:	PYGO1
Alternative Name:	PYGO1 ( <a href="#">PYGO1 Products</a> )

## Target Details

---

Background: PYG01 is involved in signal transduction through the Wnt pathway.

Molecular Weight: 45116

Gene ID: 26108

NCBI Accession: [NP\\_056432](#)

UniProt: [Q9Y3Y4](#)

Pathways: [WNT Signaling](#)

## Application Details

---

Application Notes: IF: 1:10~50. WB: 1:1000. IHC-P: 1:10~50

Restrictions: For Research Use only

## Handling

---

Format: Liquid

Buffer: Purified polyclonal antibody supplied in PBS with 0.09 % (W/V) sodium azide.

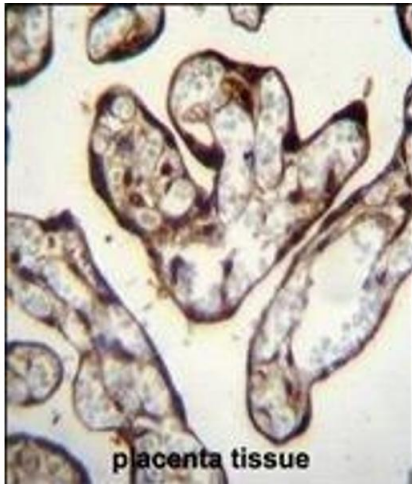
Preservative: Sodium azide

Precaution of Use: This product contains Sodium azide: a POISONOUS AND HAZARDOUS SUBSTANCE which should be handled by trained staff only.

Storage: 4 °C,-20 °C

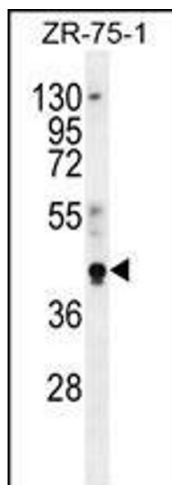
Storage Comment: Maintain refrigerated at 2-8 °C for up to 6 months. For long term storage store at -20 °C in small aliquots to prevent freeze-thaw cycles.

Expiry Date: 6 months



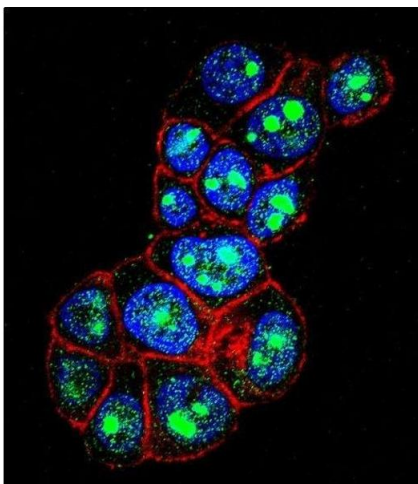
### Immunohistochemistry (Paraffin-embedded Sections)

**Image 1.** PYGO1 Antibody (C-term) (ABIN656121 and ABIN2845460) immunohistochemistry analysis in formalin fixed and paraffin embedded human placenta tissue followed by peroxidase conjugation of the secondary antibody and DAB staining. This data demonstrates the use of PYGO1 Antibody (C-term) for immunohistochemistry. Clinical relevance has not been evaluated.



### Western Blotting

**Image 2.** PYGO1 Antibody (C-term) (ABIN656121 and ABIN2845460) western blot analysis in ZR-75-1 cell line lysates (35 µg/lane). This demonstrates the PYGO1 antibody detected the PYGO1 protein (arrow).



### Immunofluorescence

**Image 3.** Confocal immunofluorescent analysis of PYGO1 Antibody (C-term) (ABIN656121 and ABIN2845460) with ZR-75-1 cell followed by Alexa Fluor 488-conjugated goat anti-rabbit IgG (green). Actin filaments have been labeled with Alexa Fluor 555 phalloidin (red). DAPI was used to stain the cell nuclear (blue).