

Datasheet for ABIN656122
anti-SLC25A6 antibody (AA 128-155)[Go to Product page](#)

4 Images

Overview

Quantity:	400 µL
Target:	SLC25A6
Binding Specificity:	AA 128-155
Reactivity:	Human
Host:	Rabbit
Clonality:	Polyclonal
Conjugate:	This SLC25A6 antibody is un-conjugated
Application:	Western Blotting (WB), Immunofluorescence (IF), Flow Cytometry (FACS), Immunohistochemistry (Paraffin-embedded Sections) (IHC (p))

Product Details

Immunogen:	This SLC25A6 antibody is generated from rabbits immunized with a KLH conjugated synthetic peptide between 128-155 amino acids from the Central region of human SLC25A6.
Clone:	RB32242
Isotype:	Ig Fraction
Purification:	This antibody is purified through a protein A column, followed by peptide affinity purification.

Target Details

Target:	SLC25A6
Alternative Name:	SLC25A6 (SLC25A6 Products)

Target Details

Background: This gene is a member of the mitochondrial carrier subfamily of solute carrier protein genes. The product of this gene functions as a gated pore that translocates ADP from the mitochondrial matrix into the cytoplasm. The protein is implicated in the function of the permeability transition pore complex (PTPC), which regulates the release of mitochondrial products that induce apoptosis. The human genome contains several non-transcribed pseudogenes of this gene.

Molecular Weight: 32866

Gene ID: 293

NCBI Accession: [NP_001627](#)

UniProt: [P12236](#)

Application Details

Application Notes: IF: 1:10~50. WB: 1:1000. IHC-P: 1:10~50. FC: 1:10~50

Restrictions: For Research Use only

Handling

Format: Liquid

Buffer: Purified polyclonal antibody supplied in PBS with 0.09 % (W/V) sodium azide.

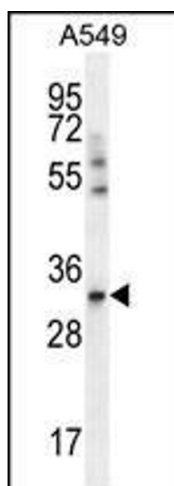
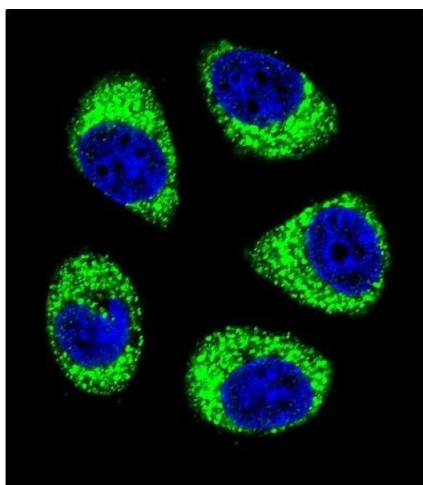
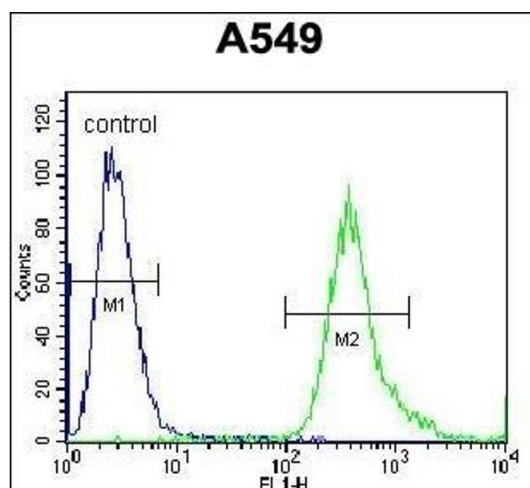
Preservative: Sodium azide

Precaution of Use: This product contains Sodium azide: a POISONOUS AND HAZARDOUS SUBSTANCE which should be handled by trained staff only.

Storage: 4 °C, -20 °C

Storage Comment: Maintain refrigerated at 2-8 °C for up to 6 months. For long term storage store at -20 °C in small aliquots to prevent freeze-thaw cycles.

Expiry Date: 6 months



Flow Cytometry

Image 1. SLC25A6 Antibody (Center) (ABIN656122 and ABIN2845461) flow cytometric analysis of A549 cells (right histogram) compared to a negative control cell (left histogram). FITC-conjugated goat-anti-rabbit secondary antibodies were used for the analysis.

Immunofluorescence

Image 2. Confocal immunofluorescent analysis of SLC25A6 Antibody (Center) (ABIN656122 and ABIN2845461) with A549 cell followed by Alexa Fluor 488-conjugated goat anti-rabbit IgG (green). DAPI was used to stain the cell nuclear (blue).

Western Blotting

Image 3. SLC25A6 Antibody (Center) (ABIN656122 and ABIN2845461) western blot analysis in A549 cell line lysates (35 µg/lane). This demonstrates the SLC25A6 antibody detected the SLC25A6 protein (arrow).

Please check the [product details page](#) for more images. Overall 4 images are available for ABIN656122.