

Datasheet for ABIN656123
anti-NEU2 antibody (N-Term)

7 Images

[Go to Product page](#)

Overview

Quantity:	400 µL
Target:	NEU2
Binding Specificity:	AA 23-50, N-Term
Reactivity:	Human
Host:	Rabbit
Clonality:	Polyclonal
Conjugate:	This NEU2 antibody is un-conjugated
Application:	Western Blotting (WB), Immunofluorescence (IF), Flow Cytometry (FACS), Immunohistochemistry (Paraffin-embedded Sections) (IHC (p))

Product Details

Immunogen:	This NEU2 antibody is generated from rabbits immunized with a KLH conjugated synthetic peptide between 23-50 amino acids from the N-terminal region of human NEU2.
Clone:	RB32244
Isotype:	Ig Fraction
Purification:	This antibody is purified through a protein A column, followed by peptide affinity purification.

Target Details

Target:	NEU2
Alternative Name:	NEU2 (NEU2 Products)

Target Details

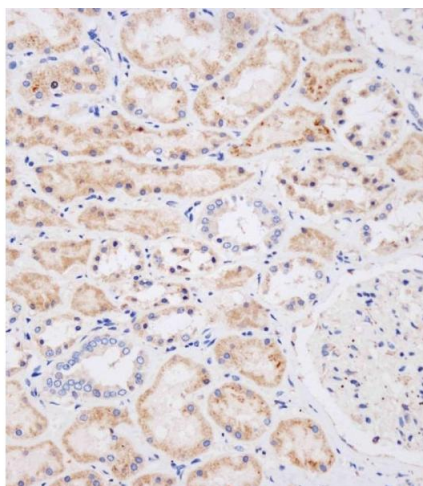
Background:	This gene belongs to a family of glycohydrolytic enzymes which remove sialic acid residues from glycoproteins and glycolipids. Expression studies in COS7 cells confirmed that this gene encodes a functional sialidase. Its cytosolic localization was demonstrated by cell fractionation experiments. [provided by RefSeq].
Molecular Weight:	42254
Gene ID:	4759
NCBI Accession:	NP_005374
UniProt:	Q9Y3R4
Pathways:	Regulation of Muscle Cell Differentiation, Skeletal Muscle Fiber Development

Application Details

Application Notes:	IF: 1:10~50. WB: 1:1000. WB: 1:2000. WB: 1:1000. IHC-P-Leica: 1:250. IHC-P-Leica: 1:250. FC: 1:10~50
Restrictions:	For Research Use only

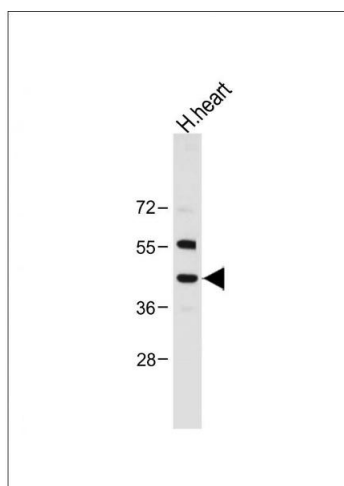
Handling

Format:	Liquid
Buffer:	Purified polyclonal antibody supplied in PBS with 0.09 % (W/V) sodium azide.
Preservative:	Sodium azide
Precaution of Use:	This product contains Sodium azide: a POISONOUS AND HAZARDOUS SUBSTANCE which should be handled by trained staff only.
Storage:	4 °C, -20 °C
Storage Comment:	Maintain refrigerated at 2-8 °C for up to 6 months. For long term storage store at -20 °C in small aliquots to prevent freeze-thaw cycles.
Expiry Date:	6 months



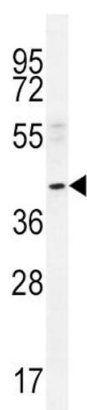
Immunohistochemistry (Paraffin-embedded Sections)

Image 1. Immunohistochemical analysis of (ABIN656123 and ABIN2845462) on paraffin-embedded human kidney tissue was performed on the Leica®BOND RXm. Tissue was fixed with formaldehyde at room temperature. Heat induced epitope retrieval was performed by EDTA buffer (pH 9.0). Samples were incubated with primary Antibody (1:250) for 15 min at room temperature. Leica Bond Polymer Refine Detection was used as the secondary antibody.



Western Blotting

Image 2. Anti-NEU2 Antibody (N-term) at 1:2000 dilution + Human heart tissue lysate Lysates/proteins at 20 µg per lane. Secondary Goat Anti-Rabbit IgG, (H+L), Peroxidase conjugated at 1/10000 dilution. Predicted band size : 42 kDa Blocking/Dilution buffer: 5 % NFDM/TBST.



Western Blotting

Image 3. NEU2 Antibody (N-term) (ABIN656123 and ABIN2845462) western blot analysis in A549 cell line lysates (35 µg/lane). This demonstrates the NEU2 antibody detected the NEU2 protein (arrow).

Please check the [product details page](#) for more images. Overall 7 images are available for ABIN656123.