

Datasheet for ABIN656135
anti-VSNL1 antibody (AA 47-75)[Go to Product page](#)

4 Images

Overview

Quantity:	400 µL
Target:	VSNL1
Binding Specificity:	AA 47-75
Reactivity:	Human, Mouse
Host:	Rabbit
Clonality:	Polyclonal
Conjugate:	This VSNL1 antibody is un-conjugated
Application:	Western Blotting (WB), Immunohistochemistry (Paraffin-embedded Sections) (IHC (p)), Flow Cytometry (FACS)

Product Details

Immunogen:	This VSNL1 antibody is generated from rabbits immunized with a KLH conjugated synthetic peptide between 47-75 amino acids from the Central region of human VSNL1.
Clone:	RB19926
Isotype:	Ig Fraction
Predicted Reactivity:	B, Rat, C, Pr
Purification:	This antibody is purified through a protein A column, followed by peptide affinity purification.

Target Details

Target:	VSNL1
---------	-------

Target Details

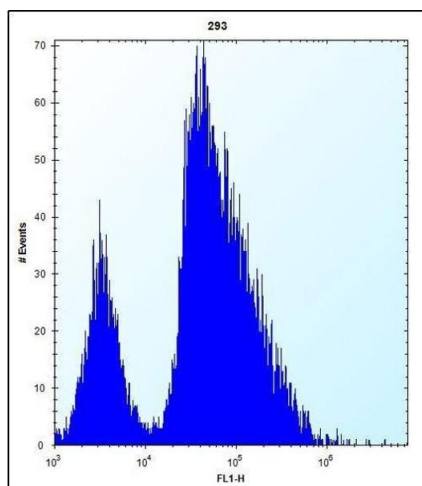
Alternative Name:	VSNL1 (VSNL1 Products)
Background:	This gene is a member of the visinin/recoverin subfamily of neuronal calcium sensor proteins. The encoded protein is strongly expressed in granule cells of the cerebellum where it associates with membranes in a calcium-dependent manner and modulates intracellular signaling pathways of the central nervous system by directly or indirectly regulating the activity of adenylyl cyclase. Alternatively spliced transcript variants have been observed, but their full-length nature has not been determined.
Molecular Weight:	22142
Gene ID:	7447
NCBI Accession:	NP_003376
UniProt:	P62760

Application Details

Application Notes:	WB: 1:1000. WB: 1:1000. IHC-P: 1:10~50. FC: 1:10~50
Restrictions:	For Research Use only

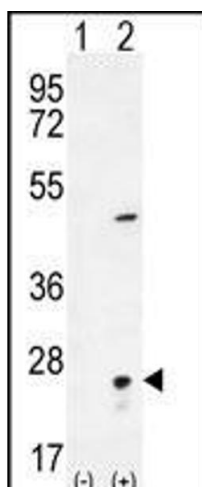
Handling

Format:	Liquid
Buffer:	Purified polyclonal antibody supplied in PBS with 0.09 % (W/V) sodium azide.
Preservative:	Sodium azide
Precaution of Use:	This product contains Sodium azide: a POISONOUS AND HAZARDOUS SUBSTANCE which should be handled by trained staff only.
Storage:	4 °C,-20 °C
Storage Comment:	VSNL1 Antibody (Center) can be refrigerated at 2-8 °C for up to 6 months. For long term storage, place the at -20 °C.
Expiry Date:	6 months



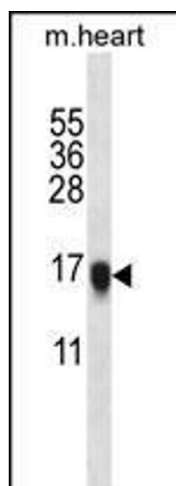
Flow Cytometry

Image 1. VSNL1 Antibody (Center) (ABIN656135 and ABIN2845474) flow cytometric analysis of 293 cells (right histogram) compared to a negative control cell (left histogram). FITC-conjugated goat-anti-rabbit secondary antibodies were used for the analysis.



Western Blotting

Image 2. Western blot analysis of VSNL1 (arrow) using rabbit polyclonal VSNL1 Antibody (Center) (ABIN656135 and ABIN2845474). 293 cell lysates (2 µg/lane) either nontransfected (Lane 1) or transiently transfected (Lane 2) with the VSNL1 gene.



Western Blotting

Image 3. VSNL1 Antibody (Center) (ABIN656135 and ABIN2845474) western blot analysis in mouse heart tissue lysates (35 µg/lane). This demonstrates the VSNL1 antibody detected the VSNL1 protein (arrow).

Please check the [product details page](#) for more images. Overall 4 images are available for ABIN656135.