



Datasheet for ABIN656145
anti-PRAMEF8 antibody (C-Term)



[Go to Product page](#)

3 Images

Overview

Quantity:	400 µL
Target:	PRAMEF8
Binding Specificity:	AA 419-447, C-Term
Reactivity:	Human
Host:	Rabbit
Clonality:	Polyclonal
Conjugate:	This PRAMEF8 antibody is un-conjugated
Application:	Western Blotting (WB), Flow Cytometry (FACS), Immunohistochemistry (Paraffin-embedded Sections) (IHC (p))

Product Details

Immunogen:	This PRAMEF8 antibody is generated from rabbits immunized with a KLH conjugated synthetic peptide between 419-447 amino acids from the C-terminal region of human PRAMEF8.
Clone:	RB29974
Isotype:	Ig Fraction
Purification:	This antibody is purified through a protein A column, followed by peptide affinity purification.

Target Details

Target:	PRAMEF8
Alternative Name:	PRAMEF8 (PRAMEF8 Products)

Target Details

Molecular Weight:	53655
Gene ID:	391002
NCBI Accession:	NP_001012276
UniProt:	Q5VWM4

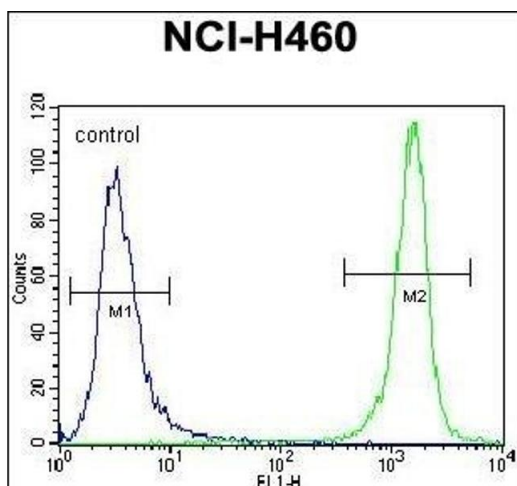
Application Details

Application Notes:	WB: 1:1000. IHC-P: 1:10~50. FC: 1:10~50
Restrictions:	For Research Use only

Handling

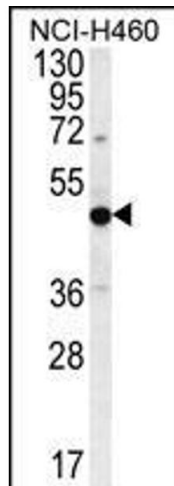
Format:	Liquid
Buffer:	Purified polyclonal antibody supplied in PBS with 0.09 % (W/V) sodium azide.
Preservative:	Sodium azide
Precaution of Use:	This product contains Sodium azide: a POISONOUS AND HAZARDOUS SUBSTANCE which should be handled by trained staff only.
Storage:	4 °C,-20 °C
Storage Comment:	PRAMEF8 Antibody (C-term) can be refrigerated at 2-8 °C for up to 6 months. For long term storage, place the at -20 °C.
Expiry Date:	6 months

Images



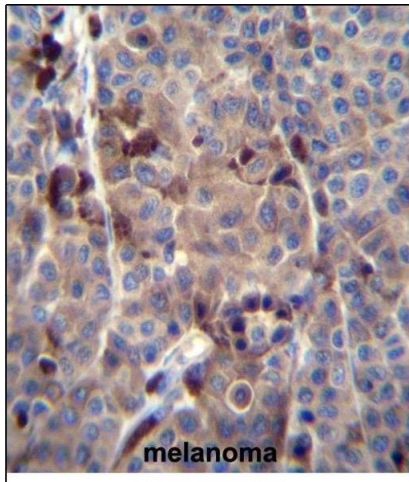
Flow Cytometry

Image 1. PRAMEF8 Antibody (C-term) (ABIN656145 and ABIN2845481) flow cytometric analysis of NCI- cells (right histogram) compared to a negative control cell (left histogram). FITC-conjugated goat-anti-rabbit secondary antibodies were used for the analysis.



Western Blotting

Image 2. PREF8 Antibody (C-term) (ABIN656145 and ABIN2845481) western blot analysis in NCI- cell line lysates (35 µg/lane). This demonstrates the PREF8 antibody detected the PREF8 protein (arrow).



Immunohistochemistry (Paraffin-embedded Sections)

Image 3. PREF8 Antibody (C-term) (ABIN656145 and ABIN2845481) immunohistochemistry analysis in formalin fixed and paraffin embedded human melanoma tissue followed by peroxidase conjugation of the secondary antibody and DAB staining. This data demonstrates the use of PREF8 Antibody (C-term) for immunohistochemistry. Clinical relevance has not been evaluated.