

Datasheet for ABIN656166
anti-SFTPA2 antibody (C-Term)[Go to Product page](#)

1 Image

Overview

Quantity:	400 µL
Target:	SFTPA2
Binding Specificity:	AA 174-202, C-Term
Reactivity:	Human
Host:	Rabbit
Clonality:	Polyclonal
Conjugate:	This SFTPA2 antibody is un-conjugated
Application:	Western Blotting (WB)

Product Details

Immunogen:	This SFTPA2B antibody is generated from rabbits immunized with a KLH conjugated synthetic peptide between 174-202 amino acids from the C-terminal region of human SFTPA2B.
Clone:	RB31040
Isotype:	Ig Fraction
Purification:	This antibody is purified through a protein A column, followed by peptide affinity purification.

Target Details

Target:	SFTPA2
Alternative Name:	SFTPA2B (SFTPA2 Products)
Background:	This gene is one of several genes encoding pulmonary-surfactant associated proteins (SFTPA)

Target Details

located on chromosome 10. Mutations in this gene and a highly similar gene located nearby, which affect the highly conserved carbohydrate recognition domain, are associated with idiopathic pulmonary fibrosis. The current version of the assembly displays only a single centromeric SFTPA gene pair rather than the two gene pairs shown in the previous assembly which were thought to have resulted from a duplication.

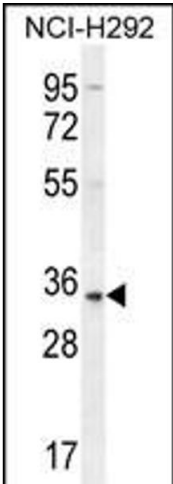
Molecular Weight:	26182
Gene ID:	729238
NCBI Accession:	NP_001092138
UniProt:	Q8IWL1

Application Details

Application Notes:	WB: 1:1000
Restrictions:	For Research Use only

Handling

Format:	Liquid
Buffer:	Purified polyclonal antibody supplied in PBS with 0.09 % (W/V) sodium azide.
Preservative:	Sodium azide
Precaution of Use:	This product contains Sodium azide: a POISONOUS AND HAZARDOUS SUBSTANCE which should be handled by trained staff only.
Storage:	4 °C,-20 °C
Storage Comment:	SFTPA2B Antibody (C-term) can be refrigerated at 2-8 °C for up to 6 months. For long term storage, place the at -20 °C.
Expiry Date:	6 months



Western Blotting

Image 1. SFTB Antibody (C-term) (ABIN656166 and ABIN2845496) western blot analysis in NCI- cell line lysates (35 µg/lane). This demonstrates the SFTB antibody detected the SFTB protein (arrow).