



[Go to Product page](#)

Datasheet for ABIN656173

anti-Cytohesin 2 antibody (N-Term)

1 Image

Overview

Quantity:	400 µL
Target:	Cytohesin 2 (CYTH2)
Binding Specificity:	AA 36-64, N-Term
Reactivity:	Mouse
Host:	Rabbit
Clonality:	Polyclonal
Conjugate:	This Cytohesin 2 antibody is un-conjugated
Application:	Western Blotting (WB)

Product Details

Immunogen:	This PSCD2 antibody is generated from rabbits immunized with a KLH conjugated synthetic peptide between 36-64 amino acids from the N-terminal region of human PSCD2.
Clone:	RB31970
Isotype:	Ig Fraction
Predicted Reactivity:	B, Rat
Purification:	This antibody is purified through a protein A column, followed by peptide affinity purification.

Target Details

Target:	Cytohesin 2 (CYTH2)
Alternative Name:	PSCD2 (CYTH2 Products)

Target Details

Background: The protein encoded by this gene is a member of the PSCD family. Members of this family have identical structural organization that consists of an N-terminal coiled-coil motif, a central Sec7 domain, and a C-terminal pleckstrin homology (PH) domain. The coiled-coil motif is involved in homodimerization, the Sec7 domain contains guanine-nucleotide exchange protein (GEP) activity, and the PH domain interacts with phospholipids and is responsible for association of PSCDs with membranes. Members of this family appear to mediate the regulation of protein sorting and membrane trafficking. The encoded protein exhibits GEP activity in vitro with ARF1, ARF3, and ARF6 and is 83 % homologous to CYTH1. Two transcript variants encoding different isoforms have been found for this gene.

Molecular Weight: 46546

Gene ID: 9266

NCBI Accession: [NP_004219](#), [NP_059431](#)

UniProt: [Q99418](#)

Application Details

Application Notes: WB: 1:1000

Restrictions: For Research Use only

Handling

Format: Liquid

Buffer: Purified polyclonal antibody supplied in PBS with 0.09 % (W/V) sodium azide.

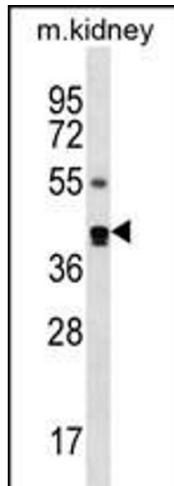
Preservative: Sodium azide

Precaution of Use: This product contains Sodium azide: a POISONOUS AND HAZARDOUS SUBSTANCE which should be handled by trained staff only.

Storage: 4 °C, -20 °C

Storage Comment: PSCD2 Antibody (N-term) can be refrigerated at 2-8 °C for up to 6 months. For long term storage, place the at -20 °C.

Expiry Date: 6 months



Western Blotting

Image 1. PSCD2 Antibody (N-term) (ABIN656173 and ABIN2845500) western blot analysis in mouse kidney tissue lysates (35 µg/lane). This demonstrates the PSCD2 antibody detected the PSCD2 protein (arrow).