

Datasheet for ABIN656203  
**anti-TLE2 antibody (C-Term)**[Go to Product page](#)

## 1 Image

## Overview

Quantity:	400 µL
Target:	TLE2
Binding Specificity:	AA 637-665, C-Term
Reactivity:	Mouse
Host:	Rabbit
Clonality:	Polyclonal
Conjugate:	This TLE2 antibody is un-conjugated
Application:	Western Blotting (WB)

## Product Details

Immunogen:	This TLE2 antibody is generated from rabbits immunized with a KLH conjugated synthetic peptide between 637-665 amino acids from the C-terminal region of human TLE2.
Clone:	RB17981
Isotype:	Ig Fraction
Purification:	This antibody is purified through a protein A column, followed by peptide affinity purification.

## Target Details

Target:	TLE2
Alternative Name:	TLE2 ( <a href="#">TLE2 Products</a> )
Background:	TLE2 is a transcriptional corepressor that binds to a number of transcription factors. Inhibits

## Target Details

the transcriptional activation mediated by CTNNB1 and TCF family members in Wnt signaling.  
The effects of full-length TLE family members may be modulated by association with dominant-negative AES (By similarity).

Molecular Weight: 79841

Gene ID: 7089

NCBI Accession: [NP\\_001138233](#), [NP\\_001138234](#), [NP\\_003251](#)

UniProt: [Q04725](#)

Pathways: [WNT Signaling](#)

## Application Details

Application Notes: WB: 1:1000

Restrictions: For Research Use only

## Handling

Format: Liquid

Buffer: Purified polyclonal antibody supplied in PBS with 0.09 % (W/V) sodium azide.

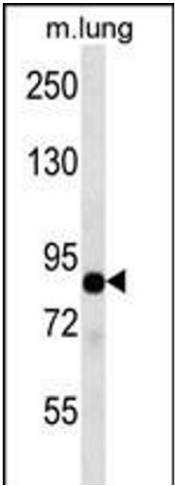
Preservative: Sodium azide

Precaution of Use: This product contains Sodium azide: a POISONOUS AND HAZARDOUS SUBSTANCE which should be handled by trained staff only.

Storage: 4 °C,-20 °C

Storage Comment: TLE2 Antibody (C-term) can be refrigerated at 2-8 °C for up to 6 months. For long term storage, place the at -20 °C.

Expiry Date: 6 months



Western Blotting

**Image 1.** TLE2 Antibody (C-term) (ABIN656203 and ABIN2845524) western blot analysis in mouse lung tissue lysates (35 µg/lane). This demonstrates the TLE2 antibody detected the TLE2 protein (arrow).