

Datasheet for ABIN656204  
**anti-TPSAB1 antibody (C-Term)**



[Go to Product page](#)

1 Image

## Overview

Quantity:	400 µL
Target:	TPSAB1
Binding Specificity:	AA 249-275, C-Term
Reactivity:	Mouse
Host:	Rabbit
Clonality:	Polyclonal
Conjugate:	This TPSAB1 antibody is un-conjugated
Application:	Western Blotting (WB)

## Product Details

Immunogen:	This TPSAB1 antibody is generated from rabbits immunized with a KLH conjugated synthetic peptide between 249-275 amino acids from the C-terminal region of human TPSAB1.
Clone:	RB19908
Isotype:	Ig Fraction
Predicted Reactivity:	H
Purification:	This antibody is purified through a protein A column, followed by peptide affinity purification.

## Target Details

Target:	TPSAB1
Alternative Name:	TPSAB1 ( <a href="#">TPSAB1 Products</a> )

## Target Details

**Background:** Tryptases comprise a family of trypsin-like serine proteases, the peptidase family S1. Tryptases are enzymatically active only as heparin-stabilized tetramers, and they are resistant to all known endogenous proteinase inhibitors. Several tryptase genes are clustered on chromosome 16p13.3. These genes are characterized by several distinct features. They have a highly conserved 3' UTR and contain tandem repeat sequences at the 5' flank and 3' UTR which are thought to play a role in regulation of the mRNA stability. These genes have an intron immediately upstream of the initiator Met codon, which separates the site of transcription initiation from protein coding sequence. This feature is characteristic of tryptases but is unusual in other genes. The alleles of this gene exhibit an unusual amount of sequence variation, such that the alleles were once thought to represent two separate genes, alpha and beta 1. Beta tryptases appear to be the main isoenzymes expressed in mast cells, whereas in basophils, alpha tryptases predominate. Tryptases have been implicated as mediators in the pathogenesis of asthma and other allergic and inflammatory disorders.

**Molecular Weight:** 30515

**Gene ID:** 7177

**NCBI Accession:** [NP\\_003285](#)

**UniProt:** [Q15661](#)

## Application Details

**Application Notes:** WB: 1:1000

**Restrictions:** For Research Use only

## Handling

**Format:** Liquid

**Buffer:** Purified polyclonal antibody supplied in PBS with 0.09 % (W/V) sodium azide.

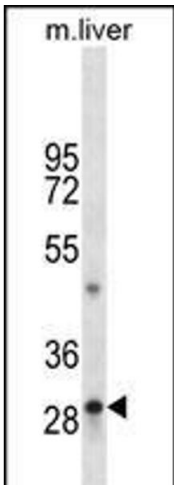
**Preservative:** Sodium azide

**Precaution of Use:** This product contains Sodium azide: a POISONOUS AND HAZARDOUS SUBSTANCE which should be handled by trained staff only.

**Storage:** 4 °C, -20 °C

**Storage Comment:** TPSAB1 Antibody (C-term) can be refrigerated at 2-8 °C for up to 6 months. For long term storage, place the at -20 °C.

Expiry Date: 6 months



Western Blotting

**Image 1.** TPSAB1 Antibody (C-term) (ABIN656204 and ABIN2850492) western blot analysis in mouse liver tissue lysates (35 µg/lane). This demonstrates the TPSAB1 antibody detected the TPSAB1 protein (arrow).