



[Go to Product page](#)

Datasheet for ABIN656207

## anti-PLCXD2 antibody (AA 99-127)

### 2 Images

#### Overview

Quantity:	400 µL
Target:	PLCXD2
Binding Specificity:	AA 99-127
Reactivity:	Human
Host:	Rabbit
Clonality:	Polyclonal
Conjugate:	This PLCXD2 antibody is un-conjugated
Application:	Western Blotting (WB), Immunohistochemistry (Paraffin-embedded Sections) (IHC (p))

#### Product Details

Immunogen:	This PLCXD2 antibody is generated from rabbits immunized with a KLH conjugated synthetic peptide between 99-127 amino acids from the Central region of human PLCXD2.
Clone:	RB29855
Isotype:	Ig Fraction
Purification:	This antibody is purified through a protein A column, followed by peptide affinity purification.

#### Target Details

Target:	PLCXD2
Alternative Name:	PLCXD2 ( <a href="#">PLCXD2 Products</a> )
Gene ID:	257068

## Target Details

NCBI Accession: [NP\\_001172035, NP\\_695000](#)

UniProt: [Q0VAA5](#)

## Application Details

Application Notes: WB: 1:1000. IHC-P: 1:10~50

Restrictions: For Research Use only

## Handling

Format: Liquid

Buffer: Purified polyclonal antibody supplied in PBS with 0.09 % (W/V) sodium azide.

Preservative: Sodium azide

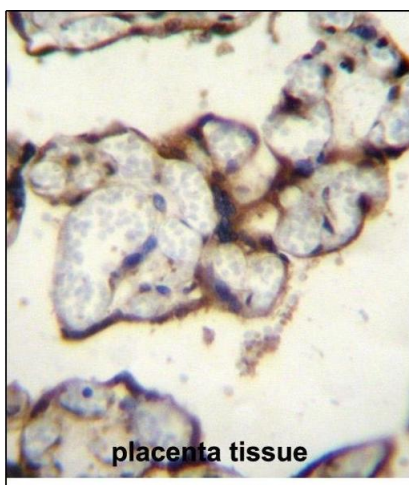
Precaution of Use: This product contains Sodium azide: a POISONOUS AND HAZARDOUS SUBSTANCE which should be handled by trained staff only.

Storage: 4 °C, -20 °C

Storage Comment: PLCXD2 Antibody (Center) can be refrigerated at 2-8 °C for up to 6 months. For long term storage, place the at -20 °C.

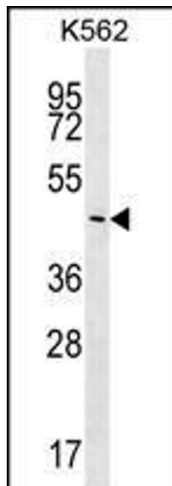
Expiry Date: 6 months

## Images



### Immunohistochemistry (Paraffin-embedded Sections)

**Image 1.** PLCXD2 Antibody (Center) (ABIN656207 and ABIN2845526) immunohistochemistry analysis in formalin fixed and paraffin embedded human placenta tissue followed by peroxidase conjugation of the secondary antibody and DAB staining. This data demonstrates the use of PLCXD2 Antibody (Center) for immunohistochemistry. Clinical relevance has not been evaluated.



### Western Blotting

**Image 2.** PLCXD2 Antibody (Center) (ABIN656207 and ABIN2845526) western blot analysis in K562 cell line lysates (35 µg/lane). This demonstrates the PLCXD2 antibody detected the PLCXD2 protein (arrow).