

Datasheet for ABIN656215
anti-POU6F2 antibody (N-Term)[Go to Product page](#)

1 Image

Overview

Quantity:	400 µL
Target:	POU6F2
Binding Specificity:	AA 34-61, N-Term
Reactivity:	Human
Host:	Rabbit
Clonality:	Polyclonal
Conjugate:	This POU6F2 antibody is un-conjugated
Application:	Western Blotting (WB)

Product Details

Immunogen:	This POU6F2 antibody is generated from rabbits immunized with a KLH conjugated synthetic peptide between 34-61 amino acids from the N-terminal region of human POU6F2.
Clone:	RB30201
Isotype:	Ig Fraction
Purification:	This antibody is purified through a protein A column, followed by peptide affinity purification.

Target Details

Target:	POU6F2
Alternative Name:	POU6F2 (POU6F2 Products)
Background:	This gene encodes a member of the POU protein family characterized by the presence of a

Target Details

bipartite DNA binding domain, consisting of a POU-specific domain and a homeodomain, separated by a variable polylinker. The DNA binding domain may bind to DNA as monomers or as homo- and/or heterodimers, in a sequence-specific manner. The POU family members are transcriptional regulators, many of which are known to control cell type-specific differentiation pathways. This gene is a tumor suppressor involved in Wilms tumor (WT) predisposition. Alternatively spliced transcript variants encoding distinct isoforms have been found for this gene.

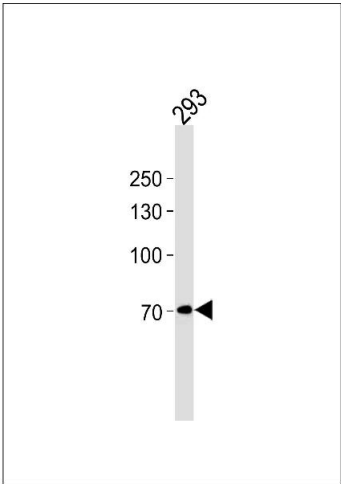
Molecular Weight:	73265
Gene ID:	11281
NCBI Accession:	NP_001159490 , NP_009183
UniProt:	P78424

Application Details

Application Notes:	WB: 1:1000
Restrictions:	For Research Use only

Handling

Format:	Liquid
Buffer:	Purified polyclonal antibody supplied in PBS with 0.09 % (W/V) sodium azide.
Preservative:	Sodium azide
Precaution of Use:	This product contains Sodium azide: a POISONOUS AND HAZARDOUS SUBSTANCE which should be handled by trained staff only.
Storage:	4 °C,-20 °C
Storage Comment:	POU6F2 Antibody (N-term) can be refrigerated at 2-8 °C for up to 6 months. For long term storage, place the at -20 °C.
Expiry Date:	6 months



Western Blotting

Image 1. POU6F2 Antibody (N-term) (ABIN656215 and ABIN2845532) western blot analysis in 293 cell line lysates (35 µg/lane). This demonstrates the POU6F2 antibody detected the POU6F2 protein (arrow).