

Datasheet for ABIN656217
anti-LIPC antibody (AA 310-338)[Go to Product page](#)

3 Images

Overview

Quantity:	400 µL
Target:	LIPC
Binding Specificity:	AA 310-338
Reactivity:	Human
Host:	Rabbit
Clonality:	Polyclonal
Conjugate:	This LIPC antibody is un-conjugated
Application:	Western Blotting (WB), Flow Cytometry (FACS), Immunohistochemistry (Paraffin-embedded Sections) (IHC (p))

Product Details

Immunogen:	This LIPC antibody is generated from rabbits immunized with a KLH conjugated synthetic peptide between 310-338 amino acids from the Central region of human LIPC.
Clone:	RB31016
Isotype:	Ig Fraction
Purification:	This antibody is purified through a protein A column, followed by peptide affinity purification.

Target Details

Target:	LIPC
Alternative Name:	LIPC (LIPC Products)

Target Details

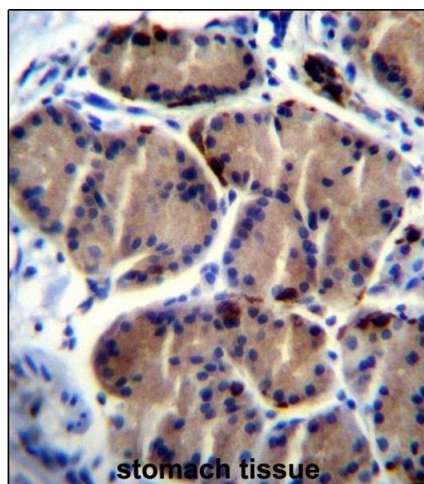
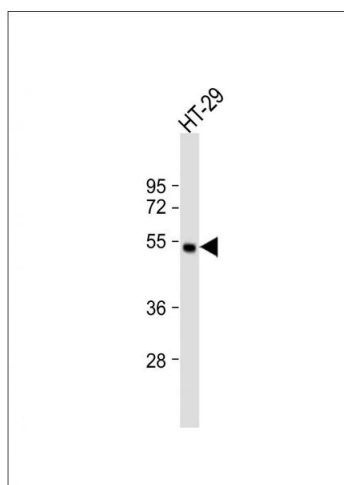
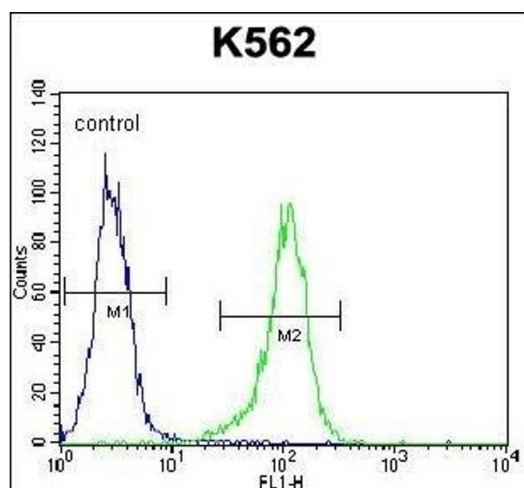
Background:	LIPC encodes hepatic triglyceride lipase, which is expressed in liver. LIPC has the dual functions of triglyceride hydrolase and ligand/bridging factor for receptor-mediated lipoprotein uptake.
Molecular Weight:	55914
Gene ID:	3990
NCBI Accession:	NP_000227
UniProt:	P11150
Pathways:	Lipid Metabolism

Application Details

Application Notes:	WB: 1:500. IHC-P: 1:10~50. FC: 1:10~50
Restrictions:	For Research Use only

Handling

Format:	Liquid
Buffer:	Purified polyclonal antibody supplied in PBS with 0.09 % (W/V) sodium azide.
Preservative:	Sodium azide
Precaution of Use:	This product contains Sodium azide: a POISONOUS AND HAZARDOUS SUBSTANCE which should be handled by trained staff only.
Storage:	4 °C,-20 °C
Storage Comment:	LIPC Antibody (Center) can be refrigerated at 2-8 °C for up to 6 months. For long term storage, place the at -20 °C.
Expiry Date:	6 months



Flow Cytometry

Image 1. LIPC Antibody (Center) (ABIN656217 and ABIN2845534) flow cytometric analysis of K562 cells (right histogram) compared to a negative control cell (left histogram). FITC-conjugated goat-anti-rabbit secondary antibodies were used for the analysis.

Western Blotting

Image 2. Anti-LIPC Antibody (Center) at 1:500 dilution + HT-29 whole cell lysate. Lysates/proteins at 20 µg per lane. Secondary Goat Anti-Rabbit IgG, (H+L), Peroxidase conjugated at 1/10000 dilution. Predicted band size : 56 kDa. Blocking/Dilution buffer: 5 % NFDm/TBST.

Immunohistochemistry (Paraffin-embedded Sections)

Image 3. LIPC Antibody (Center) (ABIN656217 and ABIN2845534) immunohistochemistry analysis in formalin fixed and paraffin embedded human stomach tissue followed by peroxidase conjugation of the secondary antibody and DAB staining. This data demonstrates the use of LIPC Antibody (Center) for immunohistochemistry. Clinical relevance has not been evaluated.