

Datasheet for ABIN656219  
**anti-GNE antibody (N-Term)**[Go to Product page](#)

## 2 Images

## Overview

Quantity:	400 µL
Target:	GNE
Binding Specificity:	AA 169-197, N-Term
Reactivity:	Human
Host:	Rabbit
Clonality:	Polyclonal
Conjugate:	This GNE antibody is un-conjugated
Application:	Western Blotting (WB), Immunohistochemistry (Paraffin-embedded Sections) (IHC (p))

## Product Details

Immunogen:	This GNE antibody is generated from rabbits immunized with a KLH conjugated synthetic peptide between 169-197 amino acids from the N-terminal region of human GNE.
Clone:	RB31032
Isotype:	Ig Fraction
Predicted Reactivity:	Ha, M, Rat
Purification:	This antibody is purified through a protein A column, followed by peptide affinity purification.

## Target Details

Target:	GNE
Alternative Name:	GNE ( <a href="#">GNE Products</a> )

## Target Details

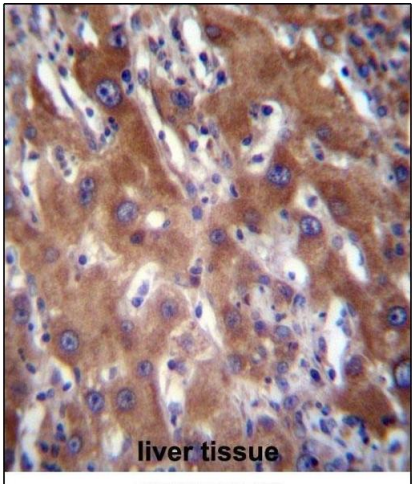
Background:	The protein encoded by this gene is a bifunctional enzyme that initiates and regulates the biosynthesis of N-acetylneuraminic acid (NeuAc), a precursor of sialic acids. It is a rate-limiting enzyme in the sialic acid biosynthetic pathway. Sialic acid modification of cell surface molecules is crucial for their function in many biologic processes, including cell adhesion and signal transduction. Differential sialylation of cell surface molecules is also implicated in the tumorigenicity and metastatic behavior of malignant cells. Mutations in this gene are associated with sialuria, autosomal recessive inclusion body myopathy, and Nonaka myopathy. Alternative splicing of this gene results in transcript variants encoding different isoforms. [provided by RefSeq].
Molecular Weight:	79275
Gene ID:	10020
NCBI Accession:	<a href="#">NP_001121699</a> , <a href="#">NP_001177312</a> , <a href="#">NP_001177313</a> , <a href="#">NP_001177317</a> , <a href="#">NP_005467</a>
UniProt:	<a href="#">Q9Y223</a>

## Application Details

Application Notes:	WB: 1:1000. IHC-P: 1:10~50
Restrictions:	For Research Use only

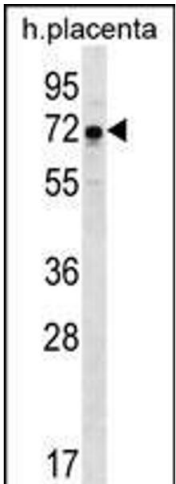
## Handling

Format:	Liquid
Buffer:	Purified polyclonal antibody supplied in PBS with 0.09 % (W/V) sodium azide.
Preservative:	Sodium azide
Precaution of Use:	This product contains Sodium azide: a POISONOUS AND HAZARDOUS SUBSTANCE which should be handled by trained staff only.
Storage:	4 °C, -20 °C
Storage Comment:	GNE Antibody (N-term) can be refrigerated at 2-8 °C for up to 6 months. For long term storage, place the at -20 °C.
Expiry Date:	6 months



**Immunohistochemistry (Paraffin-embedded Sections)**

**Image 1.** GNE Antibody (N-term) (ABIN656219 and ABIN2845536) immunohistochemistry analysis in formalin fixed and paraffin embedded human liver tissue followed by peroxidase conjugation of the secondary antibody and DAB staining. This data demonstrates the use of GNE Antibody (N-term) for immunohistochemistry. Clinical relevance has not been evaluated.



**Western Blotting**

**Image 2.** GNE Antibody (N-term) (ABIN656219 and ABIN2845536) western blot analysis in human placenta tissue lysates (35 µg/lane). This demonstrates the GNE antibody detected the GNE protein (arrow).