

Datasheet for ABIN656222  
**anti-F2RL2 antibody (N-Term)**[Go to Product page](#)

## 2 Images

## Overview

Quantity:	400 µL
Target:	F2RL2
Binding Specificity:	AA 21-50, N-Term
Reactivity:	Human
Host:	Rabbit
Clonality:	Polyclonal
Conjugate:	This F2RL2 antibody is un-conjugated
Application:	Western Blotting (WB), Immunohistochemistry (Paraffin-embedded Sections) (IHC (p))

## Product Details

Immunogen:	This F2RL2 antibody is generated from rabbits immunized with a KLH conjugated synthetic peptide between 21-50 amino acids from the N-terminal region of human F2RL2.
Clone:	RB31043
Isotype:	Ig Fraction
Purification:	This antibody is purified through a protein A column, followed by peptide affinity purification.

## Target Details

Target:	F2RL2
Alternative Name:	F2RL2 ( <a href="#">F2RL2 Products</a> )
Background:	Coagulation factor II (thrombin) receptor-like 2 (F2RL2) is a member of the large family of 7-

## Target Details

transmembrane-region receptors that couple to guanosine-nucleotide-binding proteins. F2RL2 is also a member of the protease-activated receptor family and activated by thrombin. F2RL2 is activated by proteolytic cleavage of its extracellular amino terminus. The new amino terminus functions as a tethered ligand and activates the receptor. F2RL2 is a cofactor for F2RL3 activation by thrombin. It mediates thrombin-triggered phosphoinositide hydrolysis and is expressed in a variety of tissues.

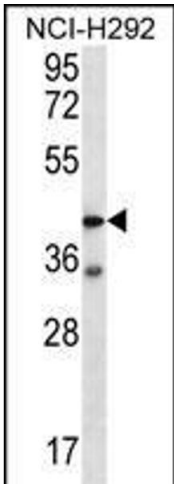
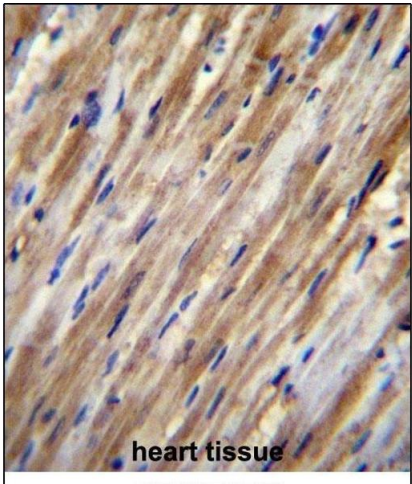
Molecular Weight:	42508
Gene ID:	2151
NCBI Accession:	<a href="#">NP_001243495</a> , <a href="#">NP_004092</a>
UniProt:	<a href="#">O00254</a>
Pathways:	<a href="#">Cell-Cell Junction Organization</a> , <a href="#">Regulation of G-Protein Coupled Receptor Protein Signaling</a>

## Application Details

Application Notes:	WB: 1:1000. IHC-P: 1:10~50
Restrictions:	For Research Use only

## Handling

Format:	Liquid
Buffer:	Purified polyclonal antibody supplied in PBS with 0.09 % (W/V) sodium azide.
Preservative:	Sodium azide
Precaution of Use:	This product contains Sodium azide: a POISONOUS AND HAZARDOUS SUBSTANCE which should be handled by trained staff only.
Storage:	4 °C,-20 °C
Storage Comment:	F2RL2 Antibody (N-term) can be refrigerated at 2-8 °C for up to 6 months. For long term storage, place the at -20 °C.
Expiry Date:	6 months



**Immunohistochemistry (Paraffin-embedded Sections)**

**Image 1.** F2RL2 Antibody (N-term) (ABIN656222 and ABIN2845538) immunohistochemistry analysis in formalin fixed and paraffin embedded human heart tissue followed by peroxidase conjugation of the secondary antibody and DAB staining. This data demonstrates the use of F2RL2 Antibody (N-term) for immunohistochemistry. Clinical relevance has not been evaluated.

**Western Blotting**

**Image 2.** F2RL2 Antibody (N-term) (ABIN656222 and ABIN2845538) western blot analysis in NCI- cell line lysates (35 µg/lane). This demonstrates the F2RL2 antibody detected the F2RL2 protein (arrow).