

Datasheet for ABIN656223  
**anti-GBA3 antibody (C-Term)**[Go to Product page](#)

## 2 Images

## Overview

|                      |  |
|----------------------|--|
| Quantity:            | 400 µL   |
| Target:              | GBA3   |
| Binding Specificity: | AA 296-325, C-Term   |
| Reactivity:          | Human  |
| Host:                | Rabbit   |
| Clonality:           | Polyclonal   |
| Conjugate:           | This GBA3 antibody is un-conjugated  |
| Application:         | Western Blotting (WB), Immunohistochemistry (Paraffin-embedded Sections) (IHC (p)) |

## Product Details

|               |  |
|---------------|--|
| Immunogen:    | This GBA3 antibody is generated from rabbits immunized with a KLH conjugated synthetic peptide between 296-325 amino acids from the C-terminal region of human GBA3. |
| Clone:        | RB31046  |
| Isotype:      | Ig Fraction  |
| Purification: | This antibody is purified through a protein A column, followed by peptide affinity purification.   |

## Target Details

|                   |   |
|-------------------|---|
| Target:           | GBA3  |
| Alternative Name: | GBA3 ( <a href="#">GBA3 Products</a> )  |
| Background:       | GBA3, or cytosolic beta-glucosidase (EC 3.2.1.21), is a predominantly liver enzyme that |

## Target Details

efficiently hydrolyzes beta-D-glucoside and beta-D-galactoside, but not any known physiologic beta-glycoside, suggesting that it may be involved in detoxification of plant glycosides (de Graaf et al., 2001 [PubMed 11389701]). GBA3 also has significant neutral glycosylceramidase activity (EC 3.2.1.62), suggesting that it may be involved in a nonlysosomal catabolic pathway of glucosylceramide metabolism (Hayashi et al., 2007 [PubMed 17595169]).

Molecular Weight: 53696

Gene ID: 57733

NCBI Accession: [NP\\_001121904](#), [NP\\_001264154](#), [NP\\_066024](#)

UniProt: [Q9H227](#)

## Application Details

Application Notes: WB: 1:1000. IHC-P: 1:10~50

Restrictions: For Research Use only

## Handling

Format: Liquid

Buffer: Purified polyclonal antibody supplied in PBS with 0.09 % (W/V) sodium azide.

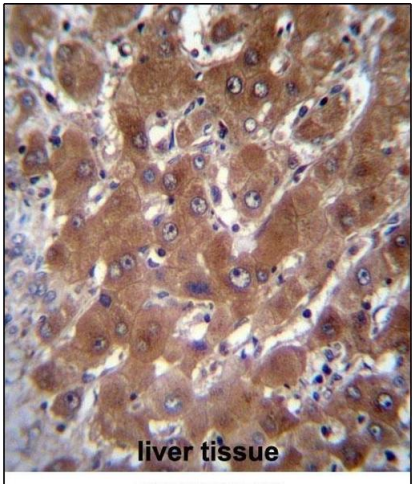
Preservative: Sodium azide

Precaution of Use: This product contains Sodium azide: a POISONOUS AND HAZARDOUS SUBSTANCE which should be handled by trained staff only.

Storage: 4 °C,-20 °C

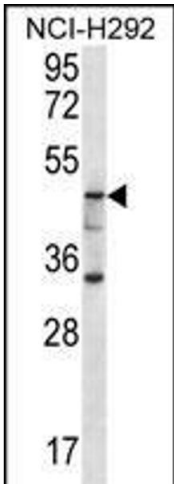
Storage Comment: GBA3 Antibody (C-term) can be refrigerated at 2-8 °C for up to 6 months. For long term storage, place the at -20 °C.

Expiry Date: 6 months



**Immunohistochemistry (Paraffin-embedded Sections)**

**Image 1.** GBA3 Antibody (C-term) (ABIN656223 and ABIN2845539) immunohistochemistry analysis in formalin fixed and paraffin embedded human liver tissue followed by peroxidase conjugation of the secondary antibody and DAB staining. This data demonstrates the use of GBA3 Antibody (C-term) for immunohistochemistry. Clinical relevance has not been evaluated.



**Western Blotting**

**Image 2.** GBA3 Antibody (C-term) (ABIN656223 and ABIN2845539) western blot analysis in NCI- cell line lysates (35 µg/lane). This demonstrates the GBA3 antibody detected the GBA3 protein (arrow).