

Datasheet for ABIN656231  
**anti-LILRB4 antibody (N-Term)**[Go to Product page](#)

## 1 Image

## Overview

Quantity:	400 µL
Target:	LILRB4
Binding Specificity:	AA 44-73, N-Term
Reactivity:	Human
Host:	Rabbit
Clonality:	Polyclonal
Conjugate:	This LILRB4 antibody is un-conjugated
Application:	Western Blotting (WB)

## Product Details

Immunogen:	This LILRB4 antibody is generated from rabbits immunized with a KLH conjugated synthetic peptide between 44-73 amino acids from the N-terminal region of human LILRB4.
Clone:	RB31065
Isotype:	Ig Fraction
Purification:	This antibody is purified through a protein A column, followed by peptide affinity purification.

## Target Details

Target:	LILRB4
Alternative Name:	LILRB4 ( <a href="#">LILRB4 Products</a> )
Background:	This gene is a member of the leukocyte immunoglobulin-like receptor (LIR) family, which is



## Target Details

found in a gene cluster at chromosomal region 19q13.4. The encoded protein belongs to the subfamily B class of LIR receptors which contain two or four extracellular immunoglobulin domains, a transmembrane domain, and two to four cytoplasmic immunoreceptor tyrosine-based inhibitory motifs (ITIMs). The receptor is expressed on immune cells where it binds to MHC class I molecules on antigen-presenting cells and transduces a negative signal that inhibits stimulation of an immune response. The receptor can also function in antigen capture and presentation. It is thought to control inflammatory responses and cytotoxicity to help focus the immune response and limit autoreactivity. Multiple transcript variants encoding different isoforms have been found for this gene.

Molecular Weight: 49356

Gene ID: 11006

NCBI Accession: [NP\\_001265355](#), [NP\\_001265356](#), [NP\\_001265358](#), [NP\\_001265359](#)

UniProt: [Q8NHJ6](#)

## Application Details

Application Notes: WB: 1:1000

Restrictions: For Research Use only

## Handling

Format: Liquid

Buffer: Purified polyclonal antibody supplied in PBS with 0.09 % (W/V) sodium azide.

Preservative: Sodium azide

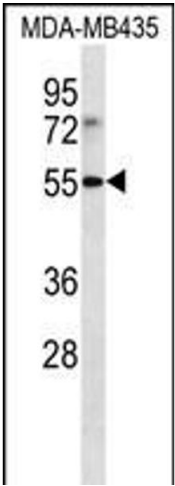
Precaution of Use: This product contains Sodium azide: a POISONOUS AND HAZARDOUS SUBSTANCE which should be handled by trained staff only.

Storage: 4 °C, -20 °C

Storage Comment: LILRB4 Antibody (N-term) can be refrigerated at 2-8 °C for up to 6 months. For long term storage, place the at -20 °C.

Expiry Date: 6 months





Western Blotting

**Image 1.** LILRB4 Antibody (N-term) (ABIN656231 and ABIN2845546) western blot analysis in MDA-M cell line lysates (35 µg/lane). This demonstrates the LILRB4 antibody detected the LILRB4 protein (arrow).