



[Go to Product page](#)

Datasheet for ABIN656236  
**anti-KCNJ8 antibody (N-Term)**

2 Images

Overview

Quantity:	400 µL
Target:	KCNJ8
Binding Specificity:	AA 4-33, N-Term
Reactivity:	Human
Host:	Rabbit
Clonality:	Polyclonal
Conjugate:	This KCNJ8 antibody is un-conjugated
Application:	Western Blotting (WB), Immunohistochemistry (Paraffin-embedded Sections) (IHC (p))

Product Details

Immunogen:	This KCNJ8 antibody is generated from rabbits immunized with a KLH conjugated synthetic peptide between 4-33 amino acids from the N-terminal region of human KCNJ8.
Clone:	RB31081
Isotype:	Ig Fraction
Predicted Reactivity:	M, Rat
Purification:	This antibody is purified through a protein A column, followed by peptide affinity purification.

Target Details

Target:	KCNJ8
Alternative Name:	KCNJ8 ( <a href="#">KCNJ8 Products</a> )

## Target Details

---

**Background:** Potassium channels are present in most mammalian cells, where they participate in a wide range of physiologic responses. The protein encoded by this gene is an integral membrane protein and inward-rectifier type potassium channel. The encoded protein, which has a greater tendency to allow potassium to flow into a cell rather than out of a cell, is controlled by G-proteins. [provided by RefSeq].

---

**Molecular Weight:** 47968

---

**Gene ID:** 3764

---

**NCBI Accession:** [NP\\_004973](#)

---

**UniProt:** [Q15842](#)

## Application Details

---

**Application Notes:** WB: 1:1000. IHC-P: 1:10~50

---

**Restrictions:** For Research Use only

## Handling

---

**Format:** Liquid

---

**Buffer:** Purified polyclonal antibody supplied in PBS with 0.09 % (W/V) sodium azide.

---

**Preservative:** Sodium azide

---

**Precaution of Use:** This product contains Sodium azide: a POISONOUS AND HAZARDOUS SUBSTANCE which should be handled by trained staff only.

---

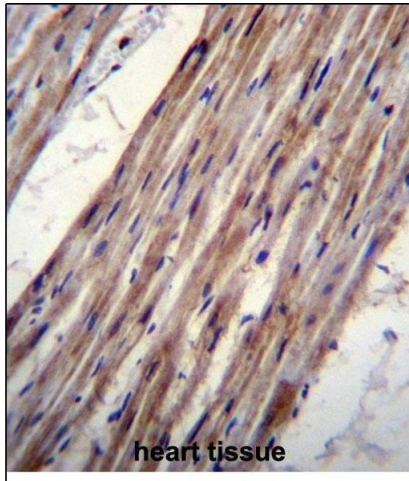
**Storage:** 4 °C,-20 °C

---

**Storage Comment:** KCNJ8 Antibody (N-term) can be refrigerated at 2-8 °C for up to 6 months. For long term storage, place the at -20 °C.

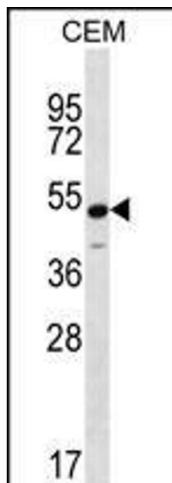
---

**Expiry Date:** 6 months



### Immunohistochemistry (Paraffin-embedded Sections)

**Image 1.** KCNJ8 Antibody (N-term) (ABIN656236 and ABIN2845552) immunohistochemistry analysis in formalin fixed and paraffin embedded human heart tissue followed by peroxidase conjugation of the secondary antibody and DAB staining. This data demonstrates the use of KCNJ8 Antibody (N-term) for immunohistochemistry. Clinical relevance has not been evaluated.



### Western Blotting

**Image 2.** KCNJ8 Antibody (N-term) (ABIN656236 and ABIN2845552) western blot analysis in CEM cell line lysates (35 µg/lane). This demonstrates the KCNJ8 antibody detected the KCNJ8 protein (arrow).