



[Go to Product page](#)

Datasheet for ABIN656242  
**anti-CALU antibody (C-Term)**

2 Images

Overview

Quantity:	400 µL
Target:	CALU
Binding Specificity:	AA 217-246, C-Term
Reactivity:	Human
Host:	Rabbit
Clonality:	Polyclonal
Conjugate:	This CALU antibody is un-conjugated
Application:	Western Blotting (WB), Immunohistochemistry (Paraffin-embedded Sections) (IHC (p))

Product Details

Immunogen:	This CALU antibody is generated from rabbits immunized with a KLH conjugated synthetic peptide between 217-246 amino acids from the C-terminal region of human CALU.
Clone:	RB31090
Isotype:	Ig Fraction
Predicted Reactivity:	B, M, Rb, Rat
Purification:	This antibody is purified through a protein A column, followed by peptide affinity purification.

Target Details

Target:	CALU
Alternative Name:	CALU ( <a href="#">CALU Products</a> )

## Target Details

---

**Background:** The product of this gene is a calcium-binding protein localized in the endoplasmic reticulum (ER) and it is involved in such ER functions as protein folding and sorting. This protein belongs to a family of multiple EF-hand proteins (CERC) that include reticulocalbin, ERC-55, and Cab45 and the product of this gene. Alternatively spliced transcript variants encoding different isoforms have been identified.

**Molecular Weight:** 37107

**Gene ID:** 813

**NCBI Accession:** [NP\\_001124146](#), [NP\\_001186600](#), [NP\\_001186601](#), [NP\\_001186602](#), [NP\\_001210](#)

**UniProt:** [O43852](#)

## Application Details

---

**Application Notes:** WB: 1:1000. IHC-P: 1:10~50

**Restrictions:** For Research Use only

## Handling

---

**Format:** Liquid

**Buffer:** Purified polyclonal antibody supplied in PBS with 0.09 % (W/V) sodium azide.

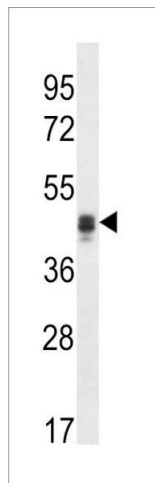
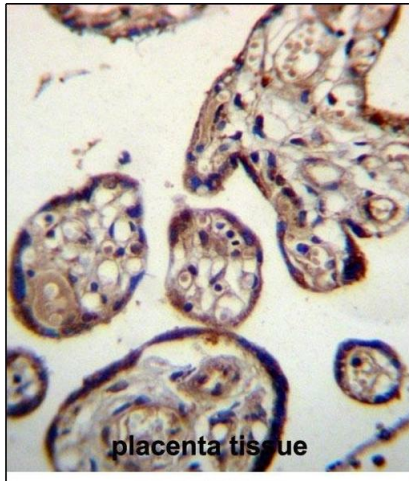
**Preservative:** Sodium azide

**Precaution of Use:** This product contains Sodium azide: a POISONOUS AND HAZARDOUS SUBSTANCE which should be handled by trained staff only.

**Storage:** 4 °C,-20 °C

**Storage Comment:** CALU Antibody (C-term) can be refrigerated at 2-8 °C for up to 6 months. For long term storage, place the at -20 °C.

**Expiry Date:** 6 months



### Immunohistochemistry (Paraffin-embedded Sections)

**Image 1.** CALU Antibody (C-term) (ABIN656242 and ABIN2845558) immunohistochemistry analysis in formalin fixed and paraffin embedded human placenta tissue followed by peroxidase conjugation of the secondary antibody and DAB staining. This data demonstrates the use of CALU Antibody (C-term) for immunohistochemistry. Clinical relevance has not been evaluated.

### Western Blotting

**Image 2.** CALU Antibody (C-term) (ABIN656242 and ABIN2845558) western blot analysis in NCI- cell line lysates (35 µg/lane). This demonstrates the CALU antibody detected the CALU protein (arrow).