



[Go to Product page](#)

Datasheet for ABIN656243

## anti-PDCD1LG2 antibody (N-Term)

### 3 Images

#### Overview

Quantity:	400 µL
Target:	PDCD1LG2
Binding Specificity:	AA 46-75, N-Term
Reactivity:	Human
Host:	Rabbit
Clonality:	Polyclonal
Conjugate:	This PDCD1LG2 antibody is un-conjugated
Application:	Western Blotting (WB), Immunohistochemistry (Paraffin-embedded Sections) (IHC (p))

#### Product Details

Immunogen:	This PDCD1LG2 antibody is generated from rabbits immunized with a KLH conjugated synthetic peptide between 46-75 amino acids from the N-terminal region of human PDCD1LG2.
Clone:	RB31095
Isotype:	Ig Fraction
Purification:	This antibody is purified through a protein A column, followed by peptide affinity purification.

#### Target Details

Target:	PDCD1LG2
Alternative Name:	PDCD1LG2 ( <a href="#">PDCD1LG2 Products</a> )
Background:	PDCD1LG2 is involved in the costimulatory signal, essential for T-cell proliferation and IFNG

## Target Details

---

production in a PDCD1-independent manner. Interaction with PDCD1 inhibits T-cell proliferation by blocking cell cycle progression and cytokine production (By similarity).

Molecular Weight: 30957

Gene ID: 80380

NCBI Accession: [NP\\_079515](#)

UniProt: [Q9BQ51](#)

## Application Details

---

Application Notes: WB: 1:1000-1:2000. WB: 1:1000. IHC-P: 1:10~50

Restrictions: For Research Use only

## Handling

---

Format: Liquid

Buffer: Purified polyclonal antibody supplied in PBS with 0.09 % (W/V) sodium azide.

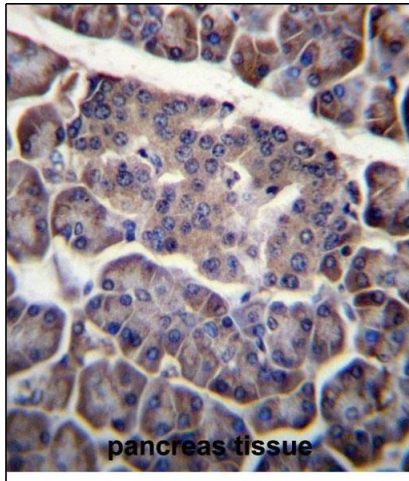
Preservative: Sodium azide

Precaution of Use: This product contains Sodium azide: a POISONOUS AND HAZARDOUS SUBSTANCE which should be handled by trained staff only.

Storage: 4 °C,-20 °C

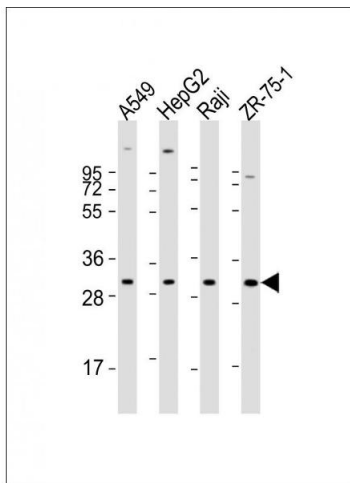
Storage Comment: PDCD1LG2 Antibody (N-term) can be refrigerated at 2-8 °C for up to 6 months. For long term storage, place the at -20 °C.

Expiry Date: 6 months



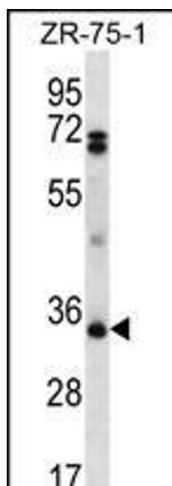
### Immunohistochemistry (Paraffin-embedded Sections)

**Image 1.** PDCD1LG2 Antibody (N-term) (ABIN656243 and ABIN2845559) immunohistochemistry analysis in formalin fixed and paraffin embedded human pancreas tissue followed by peroxidase conjugation of the secondary antibody and DAB staining. This data demonstrates the use of PDCD1LG2 Antibody (N-term) for immunohistochemistry. Clinical relevance has not been evaluated.



### Western Blotting

**Image 2.** All lanes : Anti-PDCD1LG2 Antibody (N-term) at 1:1000-1:2000 dilution Lane 1: A549 whole cell lysate Lane 2: HepG2 whole cell lysate Lane 3: Raji whole cell lysate Lane 4: ZR-75-1 whole cell lysate Lysates/proteins at 20 µg per lane. Secondary Goat Anti-Rabbit IgG, (H+L), Peroxidase conjugated at 1/10000 dilution. Predicted band size : 31 kDa Blocking/Dilution buffer: 5 % NFDM/TBST.



### Western Blotting

**Image 3.** PDCD1LG2 Antibody (N-term) (ABIN656243 and ABIN2845559) western blot analysis in ZR-75-1 cell line lysates (35 µg/lane). This demonstrates the PDCD1LG2 antibody detected the PDCD1LG2 protein (arrow).