

Datasheet for ABIN656255
anti-PCDHB14 antibody (N-Term)[Go to Product page](#)

3 Images

Overview

Quantity:	400 µL
Target:	PCDHB14
Binding Specificity:	AA 166-193, N-Term
Reactivity:	Human
Host:	Rabbit
Clonality:	Polyclonal
Conjugate:	This PCDHB14 antibody is un-conjugated
Application:	Western Blotting (WB), Flow Cytometry (FACS), Immunohistochemistry (Paraffin-embedded Sections) (IHC (p))

Product Details

Immunogen:	This PCDHB14 antibody is generated from rabbits immunized with a KLH conjugated synthetic peptide between 166-193 amino acids from the N-terminal region of human PCDHB14.
Clone:	RB31603
Isotype:	Ig Fraction
Purification:	This antibody is purified through a protein A column, followed by peptide affinity purification.

Target Details

Target:	PCDHB14
Alternative Name:	PCDHB14 (PCDHB14 Products)

Target Details

Background: This gene is a member of the protocadherin beta gene cluster, one of three related gene clusters tandemly linked on chromosome five. The gene clusters demonstrate an unusual genomic organization similar to that of B-cell and T-cell receptor gene clusters. The beta cluster contains 16 genes and 3 pseudogenes, each encoding 6 extracellular cadherin domains and a cytoplasmic tail that deviates from others in the cadherin superfamily. The extracellular domains interact in a homophilic manner to specify differential cell-cell connections. Unlike the alpha and gamma clusters, the transcripts from these genes are made up of only one large exon, not sharing common 3' exons as expected. These neural cadherin-like cell adhesion proteins are integral plasma membrane proteins. Their specific functions are unknown but they most likely play a critical role in the establishment and function of specific cell-cell neural connections.

Molecular Weight: 87548

Gene ID: 56122

NCBI Accession: [NP_061757](#)

UniProt: [Q9Y5E9](#)

Application Details

Application Notes: WB: 1:1000. IHC-P: 1:10~50. FC: 1:10~50

Restrictions: For Research Use only

Handling

Format: Liquid

Buffer: Purified polyclonal antibody supplied in PBS with 0.09 % (W/V) sodium azide.

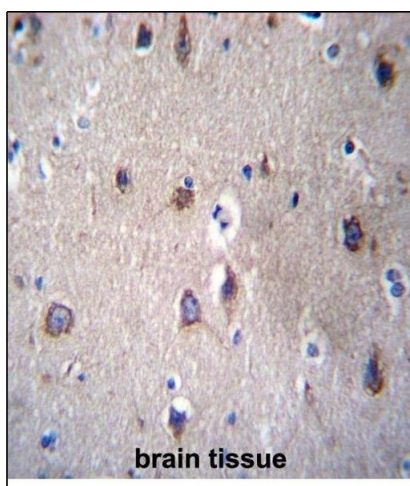
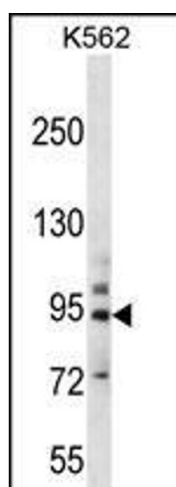
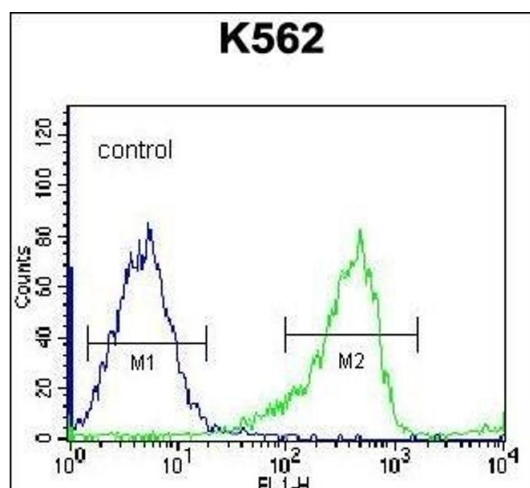
Preservative: Sodium azide

Precaution of Use: This product contains Sodium azide: a POISONOUS AND HAZARDOUS SUBSTANCE which should be handled by trained staff only.

Storage: 4 °C,-20 °C

Storage Comment: PCDHB14 Antibody (N-term) can be refrigerated at 2-8 °C for up to 6 months. For long term storage, place the at -20 °C.

Expiry Date: 6 months



Flow Cytometry

Image 1. PCDHB14 Antibody (N-term) (ABIN656255 and ABIN2845571) flow cytometric analysis of K562 cells (right histogram) compared to a negative control cell (left histogram). FITC-conjugated goat-anti-rabbit secondary antibodies were used for the analysis.

Western Blotting

Image 2. PCDHB14 Antibody (N-term) (ABIN656255 and ABIN2845571) western blot analysis in K562 cell line lysates (35 µg/lane). This demonstrates the PCDHB14 antibody detected the PCDHB14 protein (arrow).

Immunohistochemistry (Paraffin-embedded Sections)

Image 3. PCDHB14 Antibody (N-term) (ABIN656255 and ABIN2845571) immunohistochemistry analysis in formalin fixed and paraffin embedded human brain tissue followed by peroxidase conjugation of the secondary antibody and DAB staining. This data demonstrates the use of PCDHB14 Antibody (N-term) for immunohistochemistry. Clinical relevance has not been evaluated.