

Datasheet for ABIN656260  
**anti-DVL1 antibody (AA 442-470)**

7 Images

1 Publication

[Go to Product page](#)

## Overview

Quantity:	400 µL
Target:	DVL1
Binding Specificity:	AA 442-470
Reactivity:	Human, Mouse
Host:	Rabbit
Clonality:	Polyclonal
Conjugate:	This DVL1 antibody is un-conjugated
Application:	Western Blotting (WB), Immunofluorescence (IF), Immunohistochemistry (Paraffin-embedded Sections) (IHC (p))

## Product Details

Immunogen:	This DVL1 antibody is generated from rabbits immunized with a KLH conjugated synthetic peptide between 442-470 amino acids from the Central region of human DVL1.
Clone:	RB31716
Isotype:	Ig Fraction
Predicted Reactivity:	Rat
Purification:	This antibody is purified through a protein A column, followed by peptide affinity purification.

## Target Details

Target:	DVL1
---------	------

## Target Details

Alternative Name:	DVL1 ( <a href="#">DVL1 Products</a> )
Background:	DVL1, the human homolog of the Drosophila dishevelled gene (dsh) encodes a cytoplasmic phosphoprotein that regulates cell proliferation, acting as a transducer molecule for developmental processes, including segmentation and neuroblast specification. DVL1 is a candidate gene for neuroblastomatous transformation. The Schwartz-Jampel syndrome and Charcot-Marie-Tooth disease type 2A have been mapped to the same region as DVL1. The phenotypes of these diseases may be consistent with defects which might be expected from aberrant expression of a DVL gene during development.
Molecular Weight:	75187
Gene ID:	1855
NCBI Accession:	<a href="#">NP_004412</a>
UniProt:	<a href="#">O14640</a>
Pathways:	<a href="#">WNT Signaling</a> , <a href="#">Synaptic Membrane</a> , <a href="#">Skeletal Muscle Fiber Development</a>

## Application Details

Application Notes:	IF: 1:10~50. IF: 1:25. WB: 1:1000. WB: 1:2000. WB: 1:1000. IHC-P: 1:10~50. IHC-P: 1:25
Restrictions:	For Research Use only

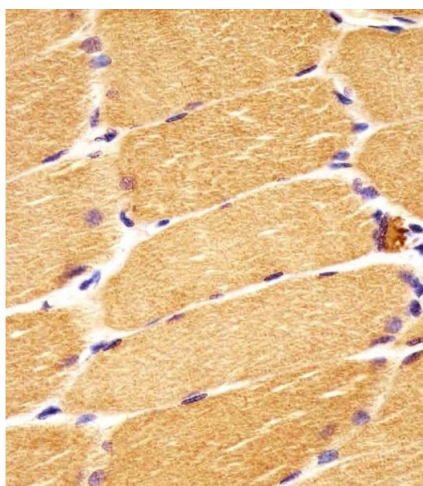
## Handling

Format:	Liquid
Buffer:	Purified polyclonal antibody supplied in PBS with 0.09 % (W/V) sodium azide.
Preservative:	Sodium azide
Precaution of Use:	This product contains Sodium azide: a POISONOUS AND HAZARDOUS SUBSTANCE which should be handled by trained staff only.
Storage:	4 °C, -20 °C
Storage Comment:	Maintain refrigerated at 2-8 °C for up to 6 months. For long term storage store at -20 °C in small aliquots to prevent freeze-thaw cycles.
Expiry Date:	6 months

## Publications

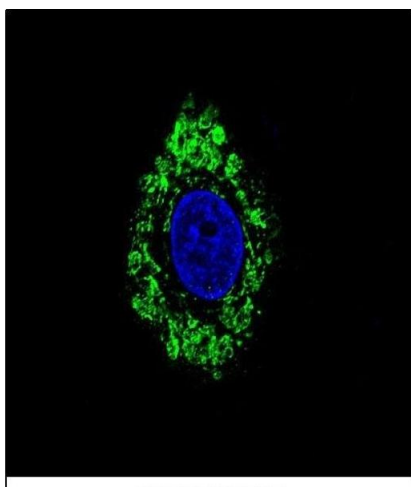
Product cited in: Liu, Peng, Zhan, Yu, Wu, Gao, Li, Guo: "Human chorionic gonadotropin  $\beta$  regulates epithelial-mesenchymal transition and metastasis in human ovarian cancer." in: **Oncology reports**, Vol. 38, Issue 3, pp. 1464-1472, (2018) ([PubMed](#)).

## Images



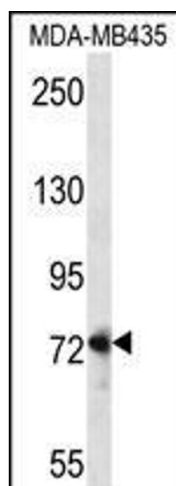
### Immunohistochemistry (Paraffin-embedded Sections)

**Image 1.** (ABIN656260 and ABIN2845574) staining DVL1 in human skeletal muscle sections by Immunohistochemistry (IHC-P - paraformaldehyde-fixed, paraffin-embedded sections). Tissue was fixed with formaldehyde and blocked with 3 % BSA for 0.5 hour at room temperature, antigen retrieval was by heat mediation with a citrate buffer (pH 6). Samples were incubated with primary antibody (1/25) for 1 hour at 37 °C. A undiluted biotinylated goat polyvalent antibody was used as the secondary antibody.



### Immunofluorescence

**Image 2.** Confocal immunofluorescent analysis of DVL1 Antibody (Center) (ABIN656260 and ABIN2845574) with HepG2 cell followed by Alexa Fluor 488-conjugated goat anti-rabbit IgG (green). DAPI was used to stain the cell nuclear (blue).



#### Western Blotting

**Image 3.** DVL1 Antibody (Center) (ABIN656260 and ABIN2845574) western blot analysis in MDA-M cell line lysates (35 µg/lane). This demonstrates the DVL1 antibody detected the DVL1 protein (arrow).

Please check the [product details page](#) for more images. Overall 7 images are available for ABIN656260.