

Datasheet for ABIN656268  
**anti-DCC antibody (AA 643-670)**[Go to Product page](#)

## 2 Images

## Overview

Quantity:	400 µL
Target:	DCC
Binding Specificity:	AA 643-670
Reactivity:	Mouse
Host:	Rabbit
Clonality:	Polyclonal
Conjugate:	This DCC antibody is un-conjugated
Application:	Western Blotting (WB), Immunohistochemistry (Paraffin-embedded Sections) (IHC (p))

## Product Details

Immunogen:	This DCC antibody is generated from rabbits immunized with a KLH conjugated synthetic peptide between 643-670 amino acids from the Central region of human DCC.
Clone:	RB32203
Isotype:	Ig Fraction
Predicted Reactivity:	Rat
Purification:	This antibody is purified through a protein A column, followed by peptide affinity purification.

## Target Details

Target:	DCC
Alternative Name:	DCC ( <a href="#">DCC Products</a> )

## Target Details

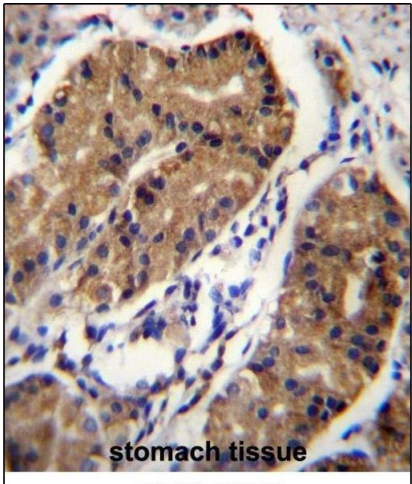
Background:	This gene encodes a netrin 1 receptor. The transmembrane protein is a member of the immunoglobulin superfamily of cell adhesion molecules, and mediates axon guidance of neuronal growth cones towards sources of netrin 1 ligand. The cytoplasmic tail interacts with the tyrosine kinases Src and focal adhesion kinase (FAK, also known as PTK2) to mediate axon attraction. The protein partially localizes to lipid rafts, and induces apoptosis in the absence of ligand. The protein functions as a tumor suppressor, and is frequently mutated or downregulated in colorectal cancer and esophageal carcinoma.
Molecular Weight:	158457
Gene ID:	1630
NCBI Accession:	<a href="#">NP_005206</a>
UniProt:	<a href="#">P43146</a>
Pathways:	<a href="#">Regulation of Cell Size</a>

## Application Details

Application Notes:	WB: 1:1000. IHC-P: 1:10~50
Restrictions:	For Research Use only

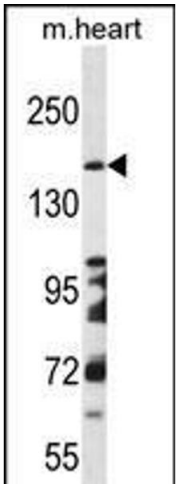
## Handling

Format:	Liquid
Buffer:	Purified polyclonal antibody supplied in PBS with 0.09 % (W/V) sodium azide.
Preservative:	Sodium azide
Precaution of Use:	This product contains Sodium azide: a POISONOUS AND HAZARDOUS SUBSTANCE which should be handled by trained staff only.
Storage:	4 °C,-20 °C
Storage Comment:	DCC Antibody (Center) can be refrigerated at 2-8 °C for up to 6 months. For long term storage, place the at -20 °C.
Expiry Date:	6 months



**Immunohistochemistry (Paraffin-embedded Sections)**

**Image 1.** DCC Antibody (Center) (ABIN656268 and ABIN2845581) immunohistochemistry analysis in formalin fixed and paraffin embedded human stomach tissue followed by peroxidase conjugation of the secondary antibody and DAB staining. This data demonstrates the use of DCC Antibody (Center) for immunohistochemistry. Clinical relevance has not been evaluated.



**Western Blotting**

**Image 2.** DCC Antibody (Center) (ABIN656268 and ABIN2845581) western blot analysis in mouse heart tissue lysates (35 µg/lane). This demonstrates the DCC antibody detected the DCC protein (arrow).