



[Go to Product page](#)

Datasheet for ABIN656270

## anti-COX6B1 antibody (C-Term)

### 2 Images

#### Overview

Quantity:	400 µL
Target:	COX6B1
Binding Specificity:	AA 59-86, C-Term
Reactivity:	Human
Host:	Rabbit
Clonality:	Polyclonal
Conjugate:	This COX6B1 antibody is un-conjugated
Application:	Western Blotting (WB), Immunohistochemistry (Paraffin-embedded Sections) (IHC (p))

#### Product Details

Immunogen:	This COX6B1 antibody is generated from rabbits immunized with a KLH conjugated synthetic peptide between 59-86 amino acids from the C-terminal region of human COX6B1.
Clone:	RB32248
Isotype:	Ig Fraction
Predicted Reactivity:	Pr
Purification:	This antibody is purified through a protein A column, followed by peptide affinity purification.

#### Target Details

Target:	COX6B1
Alternative Name:	COX6B1 ( <a href="#">COX6B1 Products</a> )

## Target Details

---

**Background:** Cytochrome c oxidase (COX), the terminal enzyme of the mitochondrial respiratory chain, catalyzes the electron transfer from reduced cytochrome c to oxygen. It is a heteromeric complex consisting of 3 catalytic subunits encoded by mitochondrial genes and multiple structural subunits encoded by nuclear genes. The mitochondrially-encoded subunits function in electron transfer, and the nuclear-encoded subunits may be involved in the regulation and assembly of the complex. This nuclear gene encodes subunit VIb. Mutations in this gene are associated with severe infantile encephalomyopathy. Three pseudogenes COX6BP-1, COX6BP-2 and COX6BP-3 have been found on chromosomes 7, 17 and 22q13.1-13.2, respectively.

**Molecular Weight:** 10192

**Gene ID:** 1340

**NCBI Accession:** [NP\\_001854](#)

**UniProt:** [P14854](#)

## Application Details

---

**Application Notes:** WB: 1:1000. IHC-P: 1:10~50

**Restrictions:** For Research Use only

## Handling

---

**Format:** Liquid

**Buffer:** Purified polyclonal antibody supplied in PBS with 0.09 % (W/V) sodium azide.

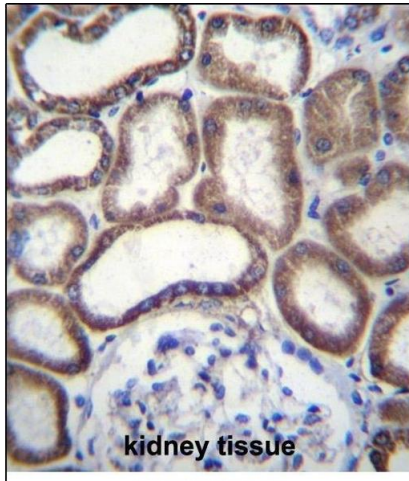
**Preservative:** Sodium azide

**Precaution of Use:** This product contains Sodium azide: a POISONOUS AND HAZARDOUS SUBSTANCE which should be handled by trained staff only.

**Storage:** 4 °C,-20 °C

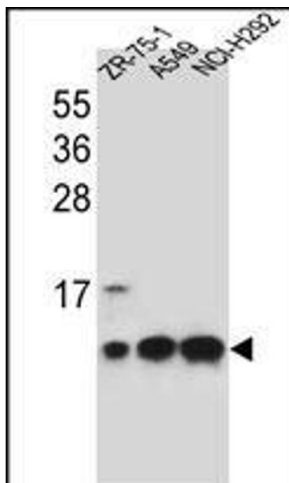
**Storage Comment:** COX6B1 Antibody (C-term) can be refrigerated at 2-8 °C for up to 6 months. For long term storage, place the at -20 °C.

**Expiry Date:** 6 months



### Immunohistochemistry (Paraffin-embedded Sections)

**Image 1.** COX6B1 Antibody (C-term) (ABIN656270 and ABIN2845582) immunohistochemistry analysis in formalin fixed and paraffin embedded human kidney tissue followed by peroxidase conjugation of the secondary antibody and DAB staining. This data demonstrates the use of COX6B1 Antibody (C-term) for immunohistochemistry. Clinical relevance has not been evaluated.



### Western Blotting

**Image 2.** COX6B1 Antibody (C-term) (ABIN656270 and ABIN2845582) western blot analysis in ZR-75-1, A549, NCI-cell line lysates (35 µg/lane). This demonstrates the COX6B1 antibody detected the COX6B1 protein (arrow).