

Datasheet for ABIN656272

anti-COX7A2L antibody (AA 37-65)[Go to Product page](#)**4** Images

Overview

| | |
|----------------------|--|
| Quantity: | 400 µL |
| Target: | COX7A2L |
| Binding Specificity: | AA 37-65 |
| Reactivity: | Human, Mouse |
| Host: | Rabbit |
| Clonality: | Polyclonal |
| Conjugate: | This COX7A2L antibody is un-conjugated |
| Application: | Western Blotting (WB), Immunohistochemistry (Paraffin-embedded Sections) (IHC (p)) |

Product Details

| | |
|---------------|---|
| Immunogen: | This COX7A2L antibody is generated from rabbits immunized with a KLH conjugated synthetic peptide between 37-65 amino acids from the Central region of human COX7A2L. |
| Clone: | RB32254 |
| Isotype: | Ig Fraction |
| Purification: | This antibody is purified through a protein A column, followed by peptide affinity purification. |

Target Details

| | |
|-------------------|--|
| Target: | COX7A2L |
| Alternative Name: | COX7A2L (COX7A2L Products) |
| Background: | Cytochrome c oxidase (COX), the terminal component of the mitochondrial respiratory chain, |

Target Details

catalyzes the electron transfer from reduced cytochrome c to oxygen. This component is a heteromeric complex consisting of 3 catalytic subunits encoded by mitochondrial genes and multiple structural subunits encoded by nuclear genes. The mitochondrially-encoded subunits function in electron transfer, and the nuclear-encoded subunits may function in the regulation and assembly of the complex. This nuclear gene encodes a protein similar to polypeptides 1 and 2 of subunit VIIa in the C-terminal region, and also highly similar to the mouse Sig81 protein sequence. This gene is expressed in all tissues, and upregulated in a breast cancer cell line after estrogen treatment. It is possible that this gene represents a regulatory subunit of COX and mediates the higher level of energy production in target cells by estrogen.

Molecular Weight: 12615

Gene ID: 9167

NCBI Accession: [NP_004709](#)

UniProt: [O14548](#)

Application Details

Application Notes: WB: 1:1000. WB: 1:1000. WB: 1:1000. IHC-P: 1:10~50

Restrictions: For Research Use only

Handling

Format: Liquid

Buffer: Purified polyclonal antibody supplied in PBS with 0.09 % (W/V) sodium azide.

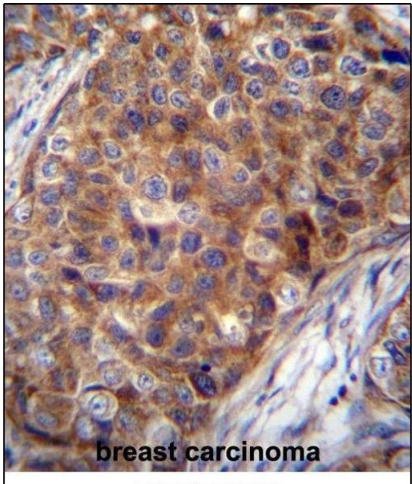
Preservative: Sodium azide

Precaution of Use: This product contains Sodium azide: a POISONOUS AND HAZARDOUS SUBSTANCE which should be handled by trained staff only.

Storage: 4 °C,-20 °C

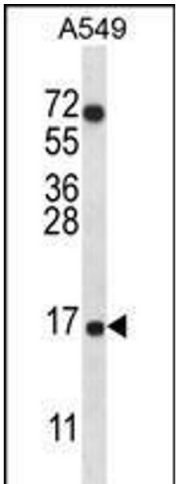
Storage Comment: COX7A2L Antibody (Center) can be refrigerated at 2-8 °C for up to 6 months. For long term storage, place the at -20 °C.

Expiry Date: 6 months



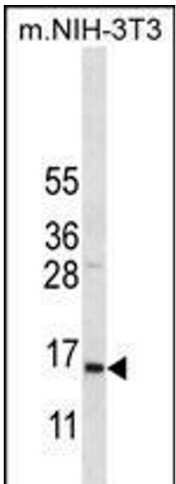
Immunohistochemistry (Paraffin-embedded Sections)

Image 1. COX7A2L Antibody (Center) (ABIN656272 and ABIN2845583) immunohistochemistry analysis in formalin fixed and paraffin embedded human breast carcinoma followed by peroxidase conjugation of the secondary antibody and DAB staining. This data demonstrates the use of COX7A2L Antibody (Center) for immunohistochemistry. Clinical relevance has not been evaluated.



Western Blotting

Image 2. COX7A2L Antibody (Center) (ABIN656272 and ABIN2845583) western blot analysis in A549 cell line lysates (35 µg/lane). This demonstrates the COX7A2L antibody detected the COX7A2L protein (arrow).



Western Blotting

Image 3. COX7A2L Antibody (Center) (ABIN656272 and ABIN2845583) western blot analysis in mouse NIH-3T3 cell line lysates (35 µg/lane). This demonstrates the COX7A2L antibody detected the COX7A2L protein (arrow).

Please check the [product details page](#) for more images. Overall 4 images are available for ABIN656272.