

Datasheet for ABIN656275
anti-MAP4K2 antibody (AA 321-349)[Go to Product page](#)

2 Images

Overview

Quantity:	400 µL
Target:	MAP4K2
Binding Specificity:	AA 321-349
Reactivity:	Human
Host:	Rabbit
Clonality:	Polyclonal
Conjugate:	This MAP4K2 antibody is un-conjugated
Application:	Western Blotting (WB), Flow Cytometry (FACS)

Product Details

Immunogen:	This MAP4K2 antibody is generated from rabbits immunized with a KLH conjugated synthetic peptide between 321-349 amino acids from the Central region of human MAP4K2.
Clone:	RB32275
Isotype:	Ig Fraction
Predicted Reactivity:	M
Purification:	This antibody is purified through a protein A column, followed by peptide affinity purification.

Target Details

Target:	MAP4K2
Alternative Name:	MAP4K2 (MAP4K2 Products)

Target Details

Background: The protein encoded by this gene is a member of the serine/threonine protein kinase family. Although this kinase is found in many tissues, its expression in lymphoid follicles is restricted to the cells of germinal centre, where it may participate in B-cell differentiation. This kinase can be activated by TNF-alpha, and has been shown to specifically activate MAP kinases. This kinase is also found to interact with TNF receptor-associated factor 2 (TRAF2), which is involved in the activation of MAP3K1/MEKK1.

Molecular Weight: 91556

Gene ID: 5871

NCBI Accession: [NP_004570](#)

UniProt: [Q12851](#)

Application Details

Application Notes: WB: 1:1000. FC: 1:10~50

Restrictions: For Research Use only

Handling

Format: Liquid

Buffer: Purified polyclonal antibody supplied in PBS with 0.09 % (W/V) sodium azide.

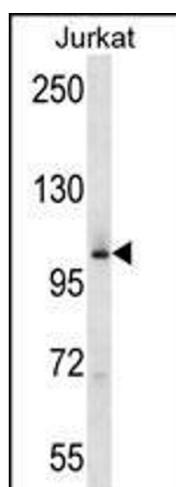
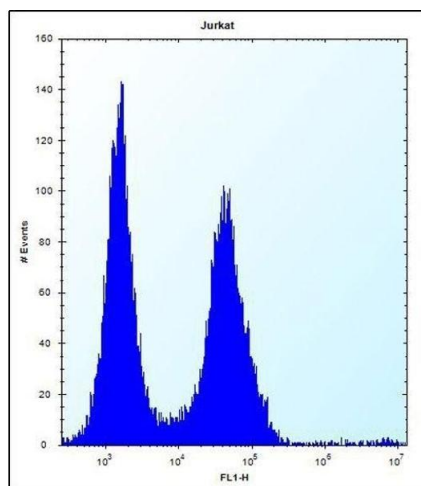
Preservative: Sodium azide

Precaution of Use: This product contains Sodium azide: a POISONOUS AND HAZARDOUS SUBSTANCE which should be handled by trained staff only.

Storage: 4 °C, -20 °C

Storage Comment: MAP4K2 Antibody (Center) can be refrigerated at 2-8 °C for up to 6 months. For long term storage, place the at -20 °C.

Expiry Date: 6 months



Flow Cytometry

Image 1. P4K2 Antibody (Center) (ABIN656275 and ABIN2845587) flow cytometric analysis of Jurkat cells (right histogram) compared to a negative control cell (left histogram). FITC-conjugated donkey-anti-rabbit secondary antibodies were used for the analysis.

Western Blotting

Image 2. P4K2 Antibody (Center) (ABIN656275 and ABIN2845587) western blot analysis in Jurkat cell line lysates (35 µg/lane). This demonstrates the P4K2 antibody detected the P4K2 protein (arrow).