

Datasheet for ABIN656281

**anti-MAD1L1 antibody (N-Term)**[Go to Product page](#)**1** Image

## Overview

Quantity:	400 µL
Target:	MAD1L1
Binding Specificity:	AA 124-151, N-Term
Reactivity:	Human
Host:	Rabbit
Clonality:	Polyclonal
Conjugate:	This MAD1L1 antibody is un-conjugated
Application:	Western Blotting (WB)

## Product Details

Immunogen:	This MAD1L1 antibody is generated from rabbits immunized with a KLH conjugated synthetic peptide between 124-151 amino acids from the N-terminal region of human MAD1L1.
Clone:	RB20598
Isotype:	Ig Fraction
Purification:	This antibody is purified through a protein A column, followed by peptide affinity purification.

## Target Details

Target:	MAD1L1
Alternative Name:	MAD1L1 ( <a href="#">MAD1L1 Products</a> )
Background:	MAD1L1 is a component of the mitotic spindle-assembly checkpoint that prevents the onset of

## Target Details

anaphase until all chromosome are properly aligned at the metaphase plate. MAD1L1 functions as a homodimer and interacts with MAD2L1. MAD1L1 may play a role in cell cycle control and tumor suppression. Three transcript variants encoding the same protein have been found for this gene. [provided by RefSeq].

Molecular Weight: 83067

Gene ID: 8379

NCBI Accession: [NP\\_001013858](#), [NP\\_001013859](#), [NP\\_003541](#)

UniProt: [Q9Y6D9](#)

Pathways: [M Phase](#)

## Application Details

Application Notes: WB: 1:1000

Restrictions: For Research Use only

## Handling

Format: Liquid

Buffer: Purified polyclonal antibody supplied in PBS with 0.09 % (W/V) sodium azide.

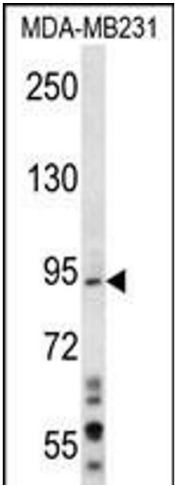
Preservative: Sodium azide

Precaution of Use: This product contains Sodium azide: a POISONOUS AND HAZARDOUS SUBSTANCE which should be handled by trained staff only.

Storage: 4 °C,-20 °C

Storage Comment: MAD1L1 Antibody (N-term) can be refrigerated at 2-8 °C for up to 6 months. For long term storage, place the at -20 °C.

Expiry Date: 6 months



Western Blotting

**Image 1.** D1L1 Antibody (N-term) (ABIN656281 and ABIN2845591) western blot analysis in MDA-M cell line lysates (35 µg/lane). This demonstrates the D1L1 antibody detected the D1L1 protein (arrow).