

Datasheet for ABIN656287  
**anti-RPL11 antibody (N-Term)**[Go to Product page](#)

## 2 Images

## Overview

Quantity:	400 µL
Target:	RPL11
Binding Specificity:	AA 1-30, N-Term
Reactivity:	Human
Host:	Rabbit
Clonality:	Polyclonal
Conjugate:	This RPL11 antibody is un-conjugated
Application:	Western Blotting (WB), Flow Cytometry (FACS)

## Product Details

Immunogen:	This RPL11 antibody is generated from rabbits immunized with a KLH conjugated synthetic peptide between 1-30 amino acids from the N-terminal region of human RPL11.
Clone:	RB31070
Isotype:	Ig Fraction
Predicted Reactivity:	B, M, Pig, Rat
Purification:	This antibody is purified through a protein A column, followed by peptide affinity purification.

## Target Details

Target:	RPL11
Alternative Name:	RPL11 ( <a href="#">RPL11 Products</a> )

## Target Details

**Background:** Ribosomes, the organelles that catalyze protein synthesis, consist of a small 40S subunit and a large 60S subunit. Together these subunits are composed of 4 RNA species and approximately 80 structurally distinct proteins. This gene encodes a ribosomal protein that is a component of the 60S subunit. The protein belongs to the L5P family of ribosomal proteins. It is located in the cytoplasm. The protein probably associates with the 5S rRNA. Alternative splice variants encoding different isoforms may exist, but they have not been fully characterized. As is typical for genes encoding ribosomal proteins, there are multiple processed pseudogenes of this gene dispersed through the genome. [provided by RefSeq].

**Molecular Weight:** 20252

**Gene ID:** 6135

**NCBI Accession:** [NP\\_000966](#), [NP\\_001186731](#)

**UniProt:** [P62913](#)

## Application Details

**Application Notes:** WB: 1:1000. FC: 1:10~50

**Restrictions:** For Research Use only

## Handling

**Format:** Liquid

**Buffer:** Purified polyclonal antibody supplied in PBS with 0.09 % (W/V) sodium azide.

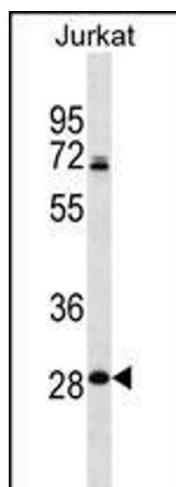
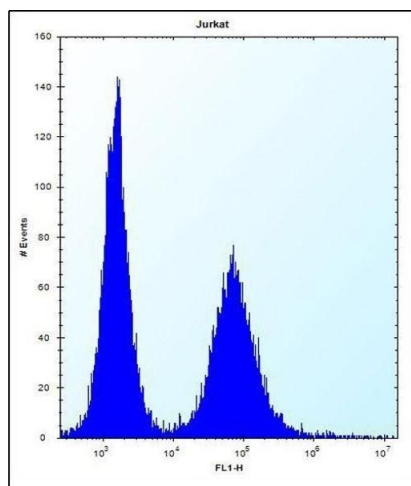
**Preservative:** Sodium azide

**Precaution of Use:** This product contains Sodium azide: a POISONOUS AND HAZARDOUS SUBSTANCE which should be handled by trained staff only.

**Storage:** 4 °C,-20 °C

**Storage Comment:** RPL11 Antibody (N-term) can be refrigerated at 2-8 °C for up to 6 months. For long term storage, place the at -20 °C.

**Expiry Date:** 6 months



### Flow Cytometry

**Image 1.** RPL11 Antibody (N-term) (ABIN656287 and ABIN2845596) flow cytometric analysis of Jurkat cells (right histogram) compared to a negative control cell (left histogram). FITC-conjugated donkey-anti-rabbit secondary antibodies were used for the analysis.

### Western Blotting

**Image 2.** RPL11 Antibody (N-term) (ABIN656287 and ABIN2845596) western blot analysis in Jurkat cell line lysates (35  $\mu$ g/lane). This demonstrates the RPL11 antibody detected the RPL11 protein (arrow).