

Datasheet for ABIN656288
anti-KRTAP25-1 antibody (C-Term)[Go to Product page](#)

2 Images

Overview

Quantity:	400 µL
Target:	KRTAP25-1
Binding Specificity:	AA 73-102, C-Term
Reactivity:	Human
Host:	Rabbit
Clonality:	Polyclonal
Conjugate:	This KRTAP25-1 antibody is un-conjugated
Application:	Western Blotting (WB), Flow Cytometry (FACS)

Product Details

Immunogen:	This KRTAP25-1 antibody is generated from rabbits immunized with a KLH conjugated synthetic peptide between 73-102 amino acids from the C-terminal region of human KRTAP25-1.
Clone:	RB31185
Isotype:	Ig Fraction
Purification:	This antibody is purified through a protein A column, followed by peptide affinity purification.

Target Details

Target:	KRTAP25-1
Alternative Name:	KRTAP25-1 (KRTAP25-1 Products)

Target Details

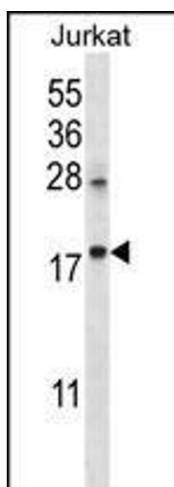
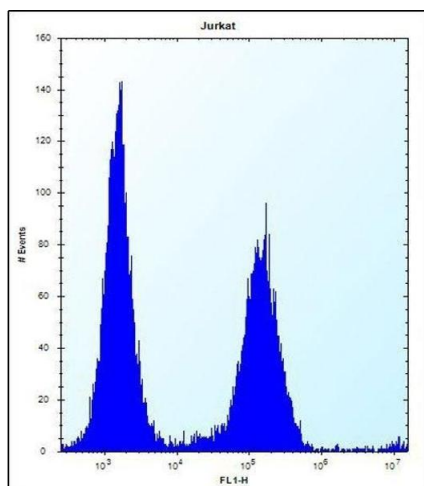
Background:	In the hair cortex, hair keratin intermediate filaments are embedded in an interfilamentous matrix, consisting of hair keratin-associated proteins (KRTAP), which are essential for the formation of a rigid and resistant hair shaft through their extensive disulfide bond cross-linking with abundant cysteine residues of hair keratins. The matrix proteins include the high-sulfur and high-glycine-tyrosine keratins (By similarity).
Molecular Weight:	11738
Gene ID:	100131902
NCBI Accession:	NP_001122070
UniProt:	Q3LHN0

Application Details

Application Notes:	WB: 1:1000. FC: 1:10~50
Restrictions:	For Research Use only

Handling

Format:	Liquid
Buffer:	Purified polyclonal antibody supplied in PBS with 0.09 % (W/V) sodium azide.
Preservative:	Sodium azide
Precaution of Use:	This product contains Sodium azide: a POISONOUS AND HAZARDOUS SUBSTANCE which should be handled by trained staff only.
Storage:	4 °C,-20 °C
Storage Comment:	KRTAP25-1 Antibody (C-term) can be refrigerated at 2-8 °C for up to 6 months. For long term storage, place the at -20 °C.
Expiry Date:	6 months



Flow Cytometry

Image 1. KRT1 Antibody (C-term) (ABIN656288 and ABIN2845597) flow cytometric analysis of Jurkat cells (right histogram) compared to a negative control cell (left histogram). FITC-conjugated donkey-anti-rabbit secondary antibodies were used for the analysis.

Western Blotting

Image 2. KRT1 Antibody (C-term) (ABIN656288 and ABIN2845597) western blot analysis in Jurkat cell line lysates (35 μ g/lane). This demonstrates the KRT1 antibody detected the KRT1 protein (arrow).