



[Go to Product page](#)

Datasheet for ABIN656294

anti-LETM2 antibody (N-Term)

3 Images

Overview

Quantity:	400 µL
Target:	LETM2
Binding Specificity:	AA 101-129, N-Term
Reactivity:	Human
Host:	Rabbit
Clonality:	Polyclonal
Conjugate:	This LETM2 antibody is un-conjugated
Application:	Western Blotting (WB), Flow Cytometry (FACS), Immunohistochemistry (Paraffin-embedded Sections) (IHC (p))

Product Details

Immunogen:	This LETM2 antibody is generated from rabbits immunized with a KLH conjugated synthetic peptide between 101-129 amino acids from the N-terminal region of human LETM2.
Clone:	RB31209
Isotype:	Ig Fraction
Purification:	This antibody is purified through a protein A column, followed by peptide affinity purification.

Target Details

Target:	LETM2
Alternative Name:	LETM2 (LETM2 Products)

Target Details

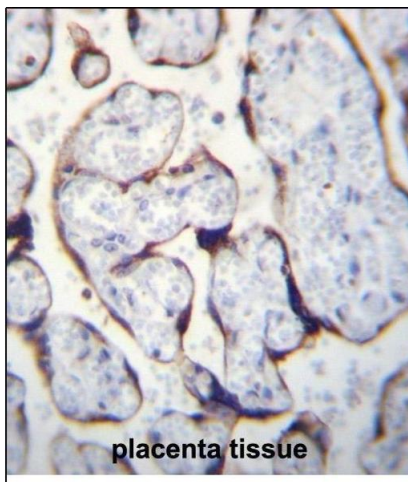
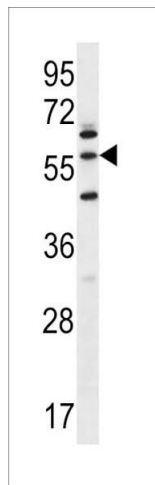
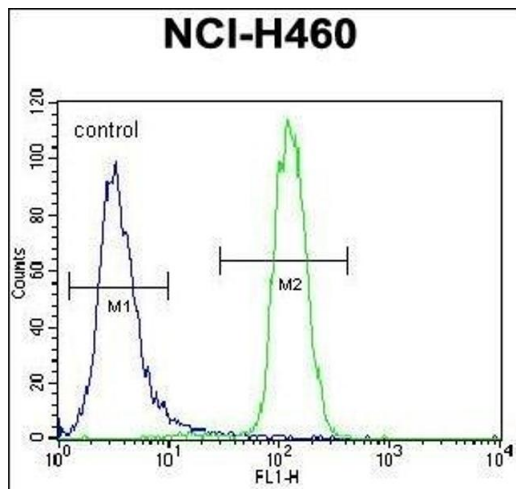
Background:	LETM2 contains 1 LETM1 domain.
Molecular Weight:	55921
Gene ID:	137994
NCBI Accession:	NP_001186588 , NP_001186589 , NP_653253
UniProt:	Q2VYF4

Application Details

Application Notes:	WB: 1:1000. IHC-P: 1:10~50. FC: 1:10~50
Restrictions:	For Research Use only

Handling

Format:	Liquid
Buffer:	Purified polyclonal antibody supplied in PBS with 0.09 % (W/V) sodium azide.
Preservative:	Sodium azide
Precaution of Use:	This product contains Sodium azide: a POISONOUS AND HAZARDOUS SUBSTANCE which should be handled by trained staff only.
Storage:	4 °C,-20 °C
Storage Comment:	LETM2 Antibody (N-term) can be refrigerated at 2-8 °C for up to 6 months. For long term storage, place the at -20 °C.
Expiry Date:	6 months



Flow Cytometry

Image 1. LETM2 Antibody (N-term) (ABIN656294 and ABIN2845601) flow cytometric analysis of NCI- cells (right histogram) compared to a negative control cell (left histogram). FITC-conjugated goat-anti-rabbit secondary antibodies were used for the analysis.

Western Blotting

Image 2. LETM2 Antibody (N-term) (ABIN656294 and ABIN2845601) western blot analysis in NCI- cell line lysates (35 µg/lane). This demonstrates the LETM2 antibody detected the LETM2 protein (arrow).

Immunohistochemistry (Paraffin-embedded Sections)

Image 3. LETM2 Antibody (N-term) (ABIN656294 and ABIN2845601) immunohistochemistry analysis in formalin fixed and paraffin embedded human placenta tissue followed by peroxidase conjugation of the secondary antibody and DAB staining. This data demonstrates the use of LETM2 Antibody (N-term) for immunohistochemistry. Clinical relevance has not been evaluated.