



[Go to Product page](#)

Datasheet for ABIN656296
anti-TLCD2 antibody (C-Term)

1 Image

Overview

Quantity:	400 µL
Target:	TLCD2
Binding Specificity:	AA 222-250, C-Term
Reactivity:	Human
Host:	Rabbit
Clonality:	Polyclonal
Conjugate:	This TLCD2 antibody is un-conjugated
Application:	Western Blotting (WB)

Product Details

Immunogen:	This TLCD2 antibody is generated from rabbits immunized with a KLH conjugated synthetic peptide between 222-250 amino acids from the C-terminal region of human TLCD2.
Clone:	RB31217
Isotype:	Ig Fraction
Purification:	This antibody is purified through a protein A column, followed by peptide affinity purification.

Target Details

Target:	TLCD2
Alternative Name:	TLCD2 (TLCD2 Products)
Molecular Weight:	28733

Target Details

Gene ID: 727910

NCBI Accession: [NP_001157879](#)

UniProt: [A6NGC4](#)

Application Details

Application Notes: WB: 1:1000

Restrictions: For Research Use only

Handling

Format: Liquid

Buffer: Purified polyclonal antibody supplied in PBS with 0.09 % (W/V) sodium azide.

Preservative: Sodium azide

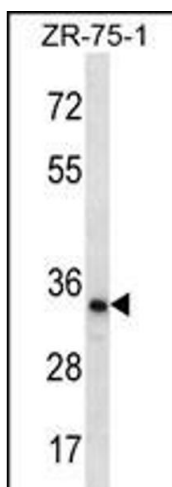
Precaution of Use: This product contains Sodium azide: a POISONOUS AND HAZARDOUS SUBSTANCE which should be handled by trained staff only.

Storage: 4 °C, -20 °C

Storage Comment: TLCD2 Antibody (C-term) can be refrigerated at 2-8 °C for up to 6 months. For long term storage, place the at -20 °C.

Expiry Date: 6 months

Images



Western Blotting

Image 1. TLCD2 Antibody (C-term) (ABIN656296 and ABIN2845603) western blot analysis in ZR-75-1 cell line lysates (35 µg/lane). This demonstrates the TLCD2 antibody detected the TLCD2 protein (arrow).