



[Go to Product page](#)

Datasheet for ABIN656301
anti-LIPJ antibody (AA 186-215)

1 Image

Overview

Quantity:	400 µL
Target:	LIPJ
Binding Specificity:	AA 186-215
Reactivity:	Human
Host:	Rabbit
Clonality:	Polyclonal
Conjugate:	This LIPJ antibody is un-conjugated
Application:	Western Blotting (WB)

Product Details

Immunogen:	This LIPJ antibody is generated from rabbits immunized with a KLH conjugated synthetic peptide between 186-215 amino acids from the Central region of human LIPJ.
Clone:	RB31239
Isotype:	Ig Fraction
Purification:	This antibody is purified through a protein A column, followed by peptide affinity purification.

Target Details

Target:	LIPJ
Alternative Name:	LIPJ (LIPJ Products)
Molecular Weight:	42388

Target Details

Gene ID: 142910

NCBI Accession: [NP_001010939](#)

UniProt: [Q5W064](#)

Application Details

Application Notes: WB: 1:1000

Restrictions: For Research Use only

Handling

Format: Liquid

Buffer: Purified polyclonal antibody supplied in PBS with 0.09 % (W/V) sodium azide.

Preservative: Sodium azide

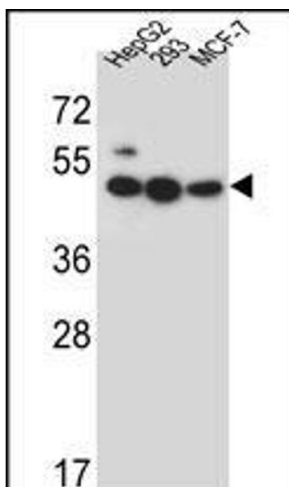
Precaution of Use: This product contains Sodium azide: a POISONOUS AND HAZARDOUS SUBSTANCE which should be handled by trained staff only.

Storage: 4 °C,-20 °C

Storage Comment: LIPJ Antibody (Center) can be refrigerated at 2-8 °C for up to 6 months. For long term storage, place the at -20 °C.

Expiry Date: 6 months

Images



Western Blotting

Image 1. LIPJ Antibody (Center) (ABIN656301 and ABIN2845605) western blot analysis in HepG2,293,MCF-7 cell line lysates (35 µg/lane).This demonstrates the LIPJ antibody detected the LIPJ protein (arrow).