

Datasheet for ABIN656303
anti-OR6X1 antibody (C-Term)[Go to Product page](#)

1 Image

Overview

Quantity:	400 µL
Target:	OR6X1
Binding Specificity:	AA 276-305, C-Term
Reactivity:	Human
Host:	Rabbit
Clonality:	Polyclonal
Conjugate:	This OR6X1 antibody is un-conjugated
Application:	Western Blotting (WB)

Product Details

Immunogen:	This OR6X1 antibody is generated from rabbits immunized with a KLH conjugated synthetic peptide between 276-305 amino acids from the C-terminal region of human OR6X1.
Clone:	RB31256
Isotype:	Ig Fraction
Purification:	This antibody is purified through a protein A column, followed by peptide affinity purification.

Target Details

Target:	OR6X1
Alternative Name:	OR6X1 (OR6X1 Products)
Background:	Olfactory receptors interact with odorant molecules in the nose, to initiate a neuronal response

Target Details

that triggers the perception of a smell. The olfactory receptor proteins are members of a large family of G-protein-coupled receptors (GPCR) arising from single coding-exon genes. Olfactory receptors share a 7-transmembrane domain structure with many neurotransmitter and hormone receptors and are responsible for the recognition and G protein-mediated transduction of odorant signals. The olfactory receptor gene family is the largest in the genome. The nomenclature assigned to the olfactory receptor genes and proteins for this organism is independent of other organisms.

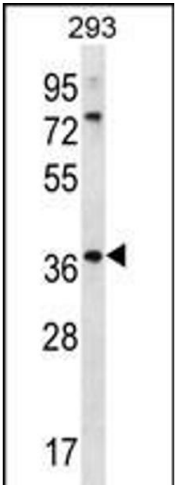
Molecular Weight:	34727
Gene ID:	390260
NCBI Accession:	NP_001005188
UniProt:	Q8NH79

Application Details

Application Notes:	WB: 1:1000
Restrictions:	For Research Use only

Handling

Format:	Liquid
Buffer:	Purified polyclonal antibody supplied in PBS with 0.09 % (W/V) sodium azide.
Preservative:	Sodium azide
Precaution of Use:	This product contains Sodium azide: a POISONOUS AND HAZARDOUS SUBSTANCE which should be handled by trained staff only.
Storage:	4 °C,-20 °C
Storage Comment:	OR6X1 Antibody (C-term) can be refrigerated at 2-8 °C for up to 6 months. For long term storage, place the at -20 °C.
Expiry Date:	6 months



Western Blotting

Image 1. OR6X1 Antibody (C-term) (ABIN656303 and ABIN2845607) western blot analysis in 293 cell line lysates (35 µg/lane). This demonstrates the OR6X1 antibody detected the OR6X1 protein (arrow).