



[Go to Product page](#)

Datasheet for ABIN656313
anti-CKAP4 antibody (C-Term)

2 Images

Overview

Quantity:	400 µL
Target:	CKAP4
Binding Specificity:	AA 574-602, C-Term
Reactivity:	Human
Host:	Rabbit
Clonality:	Polyclonal
Conjugate:	This CKAP4 antibody is un-conjugated
Application:	Western Blotting (WB), Immunohistochemistry (Paraffin-embedded Sections) (IHC (p))

Product Details

Immunogen:	This CKAP4 antibody is generated from rabbits immunized with a KLH conjugated synthetic peptide between 574-602 amino acids from the C-terminal region of human CKAP4.
Clone:	RB31301
Isotype:	Ig Fraction
Purification:	This antibody is purified through a protein A column, followed by peptide affinity purification.

Target Details

Target:	CKAP4
Alternative Name:	CKAP4 (CKAP4 Products)
Background:	CKAP4 is a substrate of DHHC2, a putative tumor suppressor. CK MNF116 and CKAP4 were

Target Details

useful in identifying squamous cell carcinomas with single cell infiltration. These results suggest a role for CKAP4 in tumor.

Molecular Weight: 66022

Gene ID: 10970

NCBI Accession: [NP_006816](#)

UniProt: [Q07065](#)

Application Details

Application Notes: WB: 1:1000. IHC-P: 1:10~50

Restrictions: For Research Use only

Handling

Format: Liquid

Buffer: Purified polyclonal antibody supplied in PBS with 0.09 % (W/V) sodium azide.

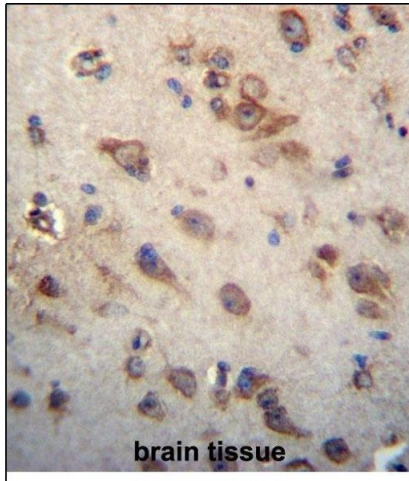
Preservative: Sodium azide

Precaution of Use: This product contains Sodium azide: a POISONOUS AND HAZARDOUS SUBSTANCE which should be handled by trained staff only.

Storage: 4 °C,-20 °C

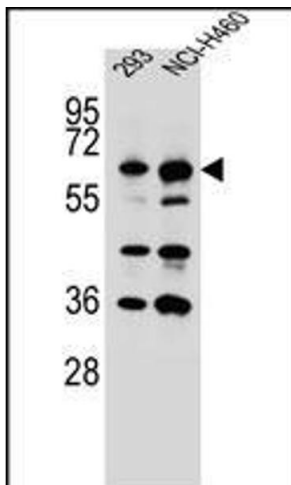
Storage Comment: CKAP4 Antibody (C-term) can be refrigerated at 2-8 °C for up to 6 months. For long term storage, place the at -20 °C.

Expiry Date: 6 months



Immunohistochemistry (Paraffin-embedded Sections)

Image 1. CK Antibody (C-term) (ABIN656313 and ABIN2845615) immunohistochemistry analysis in formalin fixed and paraffin embedded human brain tissue followed by peroxidase conjugation of the secondary antibody and DAB staining. This data demonstrates the use of CK Antibody (C-term) for immunohistochemistry. Clinical relevance has not been evaluated.



Western Blotting

Image 2. CK Antibody (C-term) (ABIN656313 and ABIN2845615) western blot analysis in 293, NCI- cell line lysates (35 µg/lane). This demonstrates the CK antibody detected the CK protein (arrow).