



[Go to Product page](#)

Datasheet for ABIN656314
anti-POMT1 antibody (C-Term)

3 Images

Overview

| | |
|----------------------|---|
| Quantity: | 400 µL |
| Target: | POMT1 |
| Binding Specificity: | AA 706-735, C-Term |
| Reactivity: | Human |
| Host: | Rabbit |
| Clonality: | Polyclonal |
| Conjugate: | This POMT1 antibody is un-conjugated |
| Application: | Western Blotting (WB), Flow Cytometry (FACS), Immunohistochemistry (Paraffin-embedded Sections) (IHC (p)) |

Product Details

| | |
|---------------|--|
| Immunogen: | This POMT1 antibody is generated from rabbits immunized with a KLH conjugated synthetic peptide between 706-735 amino acids from the C-terminal region of human POMT1. |
| Clone: | RB31305 |
| Isotype: | IgG |
| Purification: | This antibody is purified through a protein A column, followed by peptide affinity purification. |

Target Details

| | |
|-------------------|--|
| Target: | POMT1 |
| Alternative Name: | POMT1 (POMT1 Products) |

Target Details

Background: The protein encoded by this gene is an O-mannosyltransferase that requires interaction with the product of the POMT2 gene for enzymatic function. The encoded protein is found in the membrane of the endoplasmic reticulum. Defects in this gene are a cause of Walker-Warburg syndrome (WWS) and limb-girdle muscular dystrophy type 2K (LGMD2K). Several transcript variants encoding different isoforms have been found for this gene.

Molecular Weight: 84881

Gene ID: 10585

NCBI Accession: [NP_001070833](#), [NP_001070834](#), [NP_001129585](#), [NP_001129586](#), [NP_009102](#)

UniProt: [Q9Y6A1](#)

Application Details

Application Notes: WB: 1:1000. IHC-P: 1:10~50. FC: 1:10~50

Restrictions: For Research Use only

Handling

Format: Liquid

Buffer: Purified polyclonal antibody supplied in PBS with 0.09 % (W/V) sodium azide.

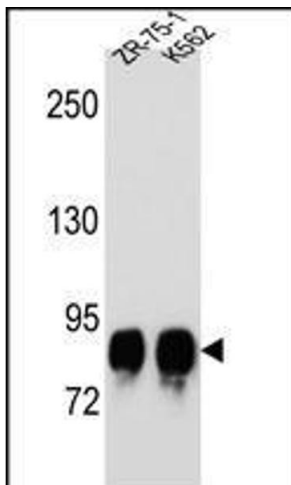
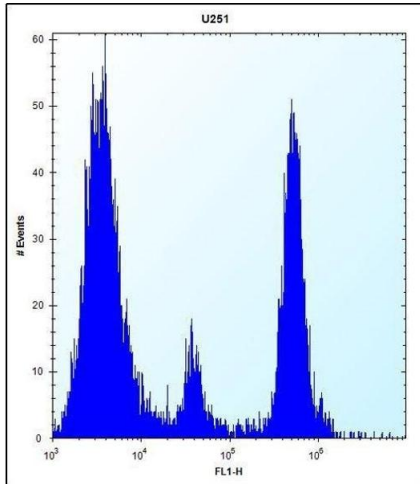
Preservative: Sodium azide

Precaution of Use: This product contains Sodium azide: a POISONOUS AND HAZARDOUS SUBSTANCE which should be handled by trained staff only.

Storage: 4 °C,-20 °C

Storage Comment: POMT1 Antibody (C-term) can be refrigerated at 2-8 °C for up to 6 months. For long term storage, place the at -20 °C.

Expiry Date: 6 months



Flow Cytometry

Image 1. POMT1 Antibody (C-term) (ABIN656314 and ABIN2845617) flow cytometric analysis of cells (right histogram) compared to a negative control cell (left histogram). FITC-conjugated goat-anti-rabbit secondary antibodies were used for the analysis.

Western Blotting

Image 2. POMT1 Antibody (C-term) (ABIN656314 and ABIN2845617) western blot analysis in ZR-75-1, K562 cell line lysates (35 µg/lane). This demonstrates the POMT1 antibody detected the POMT1 protein (arrow).

Immunohistochemistry (Paraffin-embedded Sections)

Image 3. POMT1 Antibody (C-term) (ABIN656314 and ABIN2845617) immunohistochemistry analysis in formalin fixed and paraffin embedded human testis tissue followed by peroxidase conjugation of the secondary antibody and DAB staining. This data demonstrates the use of POMT1 Antibody (C-term) for immunohistochemistry. Clinical relevance has not been evaluated.