



Datasheet for ABIN656316
anti-SLC12A6 antibody (N-Term)



[Go to Product page](#)

2 Images

Overview

| | |
|----------------------|--|
| Quantity: | 400 µL |
| Target: | SLC12A6 |
| Binding Specificity: | AA 13-42, N-Term |
| Reactivity: | Human |
| Host: | Rabbit |
| Clonality: | Polyclonal |
| Conjugate: | This SLC12A6 antibody is un-conjugated |
| Application: | Western Blotting (WB), Immunohistochemistry (Paraffin-embedded Sections) (IHC (p)) |

Product Details

| | |
|---------------|--|
| Immunogen: | This SLC12A6 antibody is generated from rabbits immunized with a KLH conjugated synthetic peptide between 13-42 amino acids from the N-terminal region of human SLC12A6. |
| Clone: | RB31331 |
| Isotype: | Ig Fraction |
| Purification: | This antibody is purified through a protein A column, followed by peptide affinity purification. |

Target Details

| | |
|-------------------|--|
| Target: | SLC12A6 |
| Alternative Name: | SLC12A6 (SLC12A6 Products) |
| Background: | This gene is a member of the K-Cl cotransporter (KCC) family. K-Cl cotransporters are integral |

Target Details

membrane proteins that lower intracellular chloride concentrations below the electrochemical equilibrium potential. The proteins encoded by this gene are activated by cell swelling induced by hypotonic conditions. Alternate splicing results in multiple transcript variants encoding different isoforms. Mutations in this gene are associated with agenesis of the corpus callosum with peripheral neuropathy.

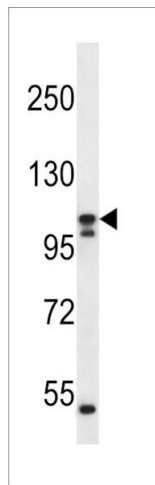
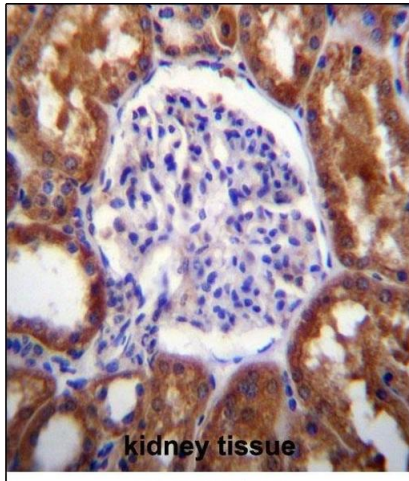
| | |
|-------------------|---|
| Molecular Weight: | 127617 |
| Gene ID: | 9990 |
| NCBI Accession: | NP_001035959 , NP_001035960 , NP_001035961 , NP_001035962 , NP_005126 , NP_598408 |
| UniProt: | Q9UHW9 |

Application Details

| | |
|--------------------|----------------------------|
| Application Notes: | WB: 1:1000. IHC-P: 1:10~50 |
| Restrictions: | For Research Use only |

Handling

| | |
|--------------------|---|
| Format: | Liquid |
| Buffer: | Purified polyclonal antibody supplied in PBS with 0.09 % (W/V) sodium azide. |
| Preservative: | Sodium azide |
| Precaution of Use: | This product contains Sodium azide: a POISONOUS AND HAZARDOUS SUBSTANCE which should be handled by trained staff only. |
| Storage: | 4 °C,-20 °C |
| Storage Comment: | SLC12A6 Antibody (N-term) can be refrigerated at 2-8 °C for up to 6 months. For long term storage, place the at -20 °C. |
| Expiry Date: | 6 months |



Immunohistochemistry (Paraffin-embedded Sections)

Image 1. SLC12A6 Antibody (N-term) (ABIN656316 and ABIN2845619) immunohistochemistry analysis in formalin fixed and paraffin embedded human kidney tissue followed by peroxidase conjugation of the secondary antibody and DAB staining. This data demonstrates the use of SLC12A6 Antibody (N-term) for immunohistochemistry. Clinical relevance has not been evaluated.

Western Blotting

Image 2. SLC12A6 Antibody (N-term) (ABIN656316 and ABIN2845619) western blot analysis in ZR-75-1 cell line lysates (35 µg/lane). This demonstrates the SLC12A6 antibody detected the SLC12A6 protein (arrow).