

Datasheet for ABIN656322
anti-ZNF146 antibody (N-Term)

3 Images

[Go to Product page](#)

Overview

Quantity:	400 µL
Target:	ZNF146
Binding Specificity:	AA 17-45, N-Term
Reactivity:	Human, Mouse
Host:	Rabbit
Clonality:	Polyclonal
Conjugate:	This ZNF146 antibody is un-conjugated
Application:	Western Blotting (WB), Flow Cytometry (FACS)

Product Details

Immunogen:	This ZNF146 antibody is generated from rabbits immunized with a KLH conjugated synthetic peptide between 17-45 amino acids from the N-terminal region of human ZNF146.
Clone:	RB31347
Isotype:	Ig Fraction
Purification:	This antibody is purified through a protein A column, followed by peptide affinity purification.

Target Details

Target:	ZNF146
Alternative Name:	ZNF146 (ZNF146 Products)
Background:	The ZNF146 protein is a 33 kDa Kruppel protein, composed solely of 10 zinc finger motifs.

Target Details

ZNF146 overexpression in tumours may alter the balance between hRap1 and other telomeric proteins, therefore ZNF146 function may be linked to telomere regulation. ZNF146 is strongly overexpressed in many pancreas and colorectal cancers. Increased gene copy numbers are detected in 3 of 12 tumor cell lines and 2 of 12 primary pancreatic carcinomas. ZNF146 is overexpressed in 80 % of colorectal cancers.

Molecular Weight: 33308

Gene ID: 7705

NCBI Accession: [NP_001093108](#), [NP_001093109](#), [NP_009076](#)

UniProt: [Q15072](#)

Application Details

Application Notes: WB: 1:1000. WB: 1:1000. FC: 1:10~50

Restrictions: For Research Use only

Handling

Format: Liquid

Buffer: Purified polyclonal antibody supplied in PBS with 0.09 % (W/V) sodium azide.

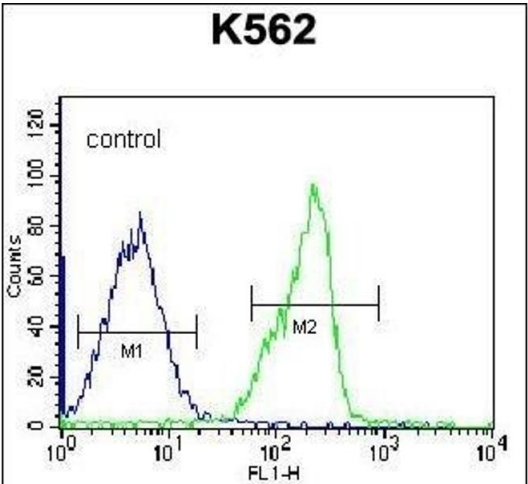
Preservative: Sodium azide

Precaution of Use: This product contains Sodium azide: a POISONOUS AND HAZARDOUS SUBSTANCE which should be handled by trained staff only.

Storage: 4 °C, -20 °C

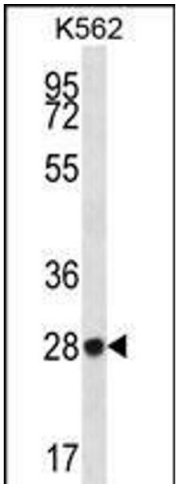
Storage Comment: ZNF146 Antibody (N-term) can be refrigerated at 2-8 °C for up to 6 months. For long term storage, place the at -20 °C.

Expiry Date: 6 months



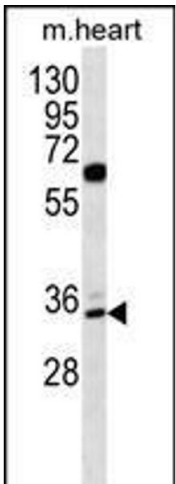
Flow Cytometry

Image 1. ZN Antibody (N-term) (ABIN656322 and ABIN2845621) flow cytometric analysis of K562 cells (right histogram) compared to a negative control cell (left histogram). FITC-conjugated goat-anti-rabbit secondary antibodies were used for the analysis.



Western Blotting

Image 2. ZN Antibody (N-term) (ABIN656322 and ABIN2845621) western blot analysis in K562 cell line lysates (35 µg/lane). This demonstrates the ZN antibody detected the ZN protein (arrow).



Western Blotting

Image 3. ZN Antibody (N-term) (ABIN656322 and ABIN2845621) western blot analysis in mouse heart tissue lysates (35 µg/lane). This demonstrates the ZN antibody detected the ZN protein (arrow).