

Datasheet for ABIN656323
anti-IGSF8 antibody (AA 226-254)[Go to Product page](#)

3 Images

Overview

Quantity:	400 µL
Target:	IGSF8
Binding Specificity:	AA 226-254
Reactivity:	Human, Mouse
Host:	Rabbit
Clonality:	Polyclonal
Conjugate:	This IGSF8 antibody is un-conjugated
Application:	Western Blotting (WB), Immunohistochemistry (Paraffin-embedded Sections) (IHC (p))

Product Details

Immunogen:	This IGSF8 antibody is generated from rabbits immunized with a KLH conjugated synthetic peptide between 226-254 amino acids from the Central region of human IGSF8.
Clone:	RB31348
Isotype:	Ig Fraction
Purification:	This antibody is purified through a protein A column, followed by peptide affinity purification.

Target Details

Target:	IGSF8
Alternative Name:	IGSF8 (IGSF8 Products)
Background:	IGSF8 may play a key role in diverse functions ascribed to CD81 and CD9 such as oocytes

Target Details

fertilization or hepatitis C virus function. May regulate proliferation and differentiation of keratinocytes. May be a negative regulator of cell motility: suppresses T-cell mobility coordinately with CD81, associates with CD82 to suppress prostate cancer cell migration, regulates epidermoid cell reaggregation and motility on laminin-5 with CD9 and CD81 as key linkers. May also play a role on integrin-dependent morphology and motility functions. May participate in the regulation of neurite outgrowth and maintenance of the neural network in the adult brain.

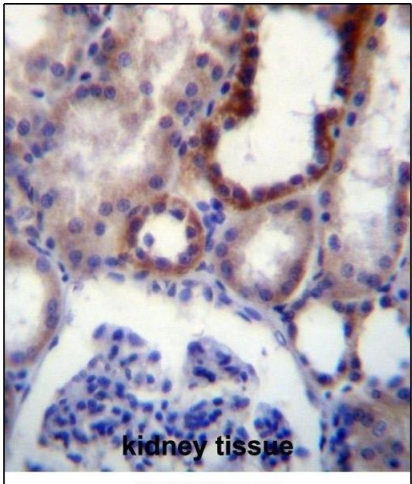
Molecular Weight:	65034
Gene ID:	93185
NCBI Accession:	NP_001193594 , NP_443100
UniProt:	Q969P0

Application Details

Application Notes:	WB: 1:1000. WB: 1:1000. IHC-P: 1:10~50
Restrictions:	For Research Use only

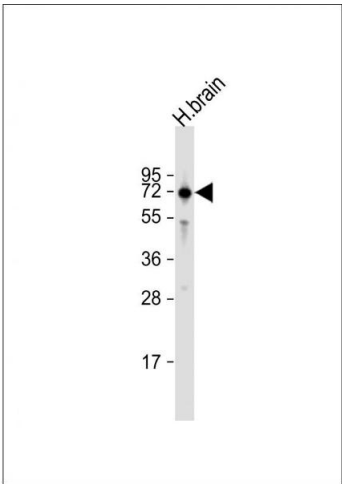
Handling

Format:	Liquid
Buffer:	Purified polyclonal antibody supplied in PBS with 0.09 % (W/V) sodium azide.
Preservative:	Sodium azide
Precaution of Use:	This product contains Sodium azide: a POISONOUS AND HAZARDOUS SUBSTANCE which should be handled by trained staff only.
Storage:	4 °C,-20 °C
Storage Comment:	IGSF8 Antibody (Center) can be refrigerated at 2-8 °C for up to 6 months. For long term storage, place the at -20 °C.
Expiry Date:	6 months



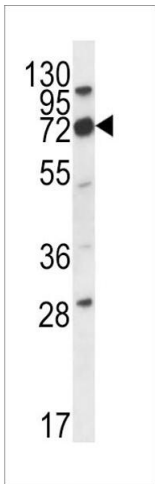
Immunohistochemistry (Paraffin-embedded Sections)

Image 1. IGSF8 Antibody (Center) (ABIN656323 and ABIN2845622) immunohistochemistry analysis in formalin fixed and paraffin embedded human kidney tissue followed by peroxidase conjugation of the secondary antibody and DAB staining. This data demonstrates the use of IGSF8 Antibody (Center) for immunohistochemistry. Clinical relevance has not been evaluated.



Western Blotting

Image 2. Anti-IGSF8 Antibody (Center) at 1:1000 dilution + human brain lysate Lysates/proteins at 20 µg per lane. Secondary Goat Anti-Rabbit IgG, (H+L), Peroxidase conjugated at 1/10000 dilution. Predicted band size : 65 kDa Blocking/Dilution buffer: 5 % NFDM/TBST.



Western Blotting

Image 3. IGSF8 Antibody (Center) (ABIN656323 and ABIN2845622) western blot analysis in mouse cerebellum tissue lysates (35 µg/lane). This demonstrates the IGSF8 antibody detected the IGSF8 protein (arrow).