

Datasheet for ABIN656326  
**anti-SLC12A7 antibody (N-Term)**[Go to Product page](#)

## 2 Images

## Overview

Quantity:	400 µL
Target:	SLC12A7
Binding Specificity:	AA 89-117, N-Term
Reactivity:	Human
Host:	Rabbit
Clonality:	Polyclonal
Conjugate:	This SLC12A7 antibody is un-conjugated
Application:	Western Blotting (WB), Immunohistochemistry (Paraffin-embedded Sections) (IHC (p))

## Product Details

Immunogen:	This SLC12A7 antibody is generated from rabbits immunized with a KLH conjugated synthetic peptide between 89-117 amino acids from the N-terminal region of human SLC12A7.
Clone:	RB31356
Isotype:	Ig Fraction
Purification:	This antibody is purified through a protein A column, followed by peptide affinity purification.

## Target Details

Target:	SLC12A7
Alternative Name:	SLC12A7 ( <a href="#">SLC12A7 Products</a> )
Background:	SLC12A7 mediates electroneutral potassium-chloride cotransport when activated by cell

## Target Details

swelling. May mediate K(+) uptake into Deiters' cells in the cochlea and contribute to K(+) recycling in the inner ear. Important for the survival of cochlear outer and inner hair cells and the maintenance of the organ of Corti. May be required for basolateral Cl(-) extrusion in the kidney and contribute to renal acidification (By similarity).

Molecular Weight: 119106

Gene ID: 10723

NCBI Accession: [NP\\_006589](#)

UniProt: [Q9Y666](#)

## Application Details

Application Notes: WB: 1:1000. IHC-P: 1:10~50

Restrictions: For Research Use only

## Handling

Format: Liquid

Buffer: Purified polyclonal antibody supplied in PBS with 0.09 % (W/V) sodium azide.

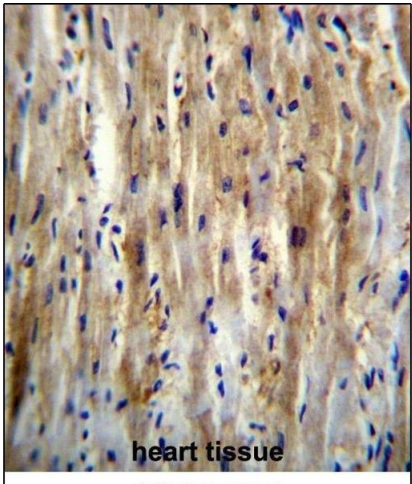
Preservative: Sodium azide

Precaution of Use: This product contains Sodium azide: a POISONOUS AND HAZARDOUS SUBSTANCE which should be handled by trained staff only.

Storage: 4 °C, -20 °C

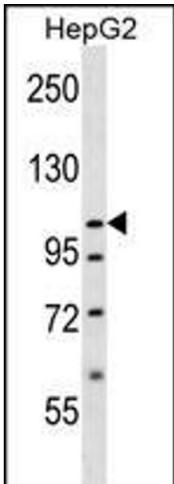
Storage Comment: SLC12A7 Antibody (N-term) can be refrigerated at 2-8 °C for up to 6 months. For long term storage, place the at -20 °C.

Expiry Date: 6 months



**Immunohistochemistry (Paraffin-embedded Sections)**

**Image 1.** SLC12A7 Antibody (N-term) (ABIN656326 and ABIN2845625) immunohistochemistry analysis in formalin fixed and paraffin embedded human heart tissue followed by peroxidase conjugation of the secondary antibody and DAB staining. This data demonstrates the use of SLC12A7 Antibody (N-term) for immunohistochemistry. Clinical relevance has not been evaluated.



**Western Blotting**

**Image 2.** SLC12A7 Antibody (N-term) (ABIN656326 and ABIN2845625) western blot analysis in HepG2 cell line lysates (35 µg/lane). This demonstrates the SLC12A7 antibody detected the SLC12A7 protein (arrow).