

Datasheet for ABIN656327 anti-DLL3 antibody (C-Term)

6 Images



[Go to Product page](#)

Overview

Quantity:	400 µL
Target:	DLL3
Binding Specificity:	AA 545-573, C-Term
Reactivity:	Human
Host:	Rabbit
Clonality:	Polyclonal
Conjugate:	This DLL3 antibody is un-conjugated
Application:	Western Blotting (WB), Immunofluorescence (IF), Immunohistochemistry (Paraffin-embedded Sections) (IHC (p))

Product Details

Immunogen:	This DLL3 antibody is generated from rabbits immunized with a KLH conjugated synthetic peptide between 545-573 amino acids from the C-terminal region of human DLL3.
Clone:	RB31357
Isotype:	Ig Fraction
Purification:	This antibody is purified through a protein A column, followed by peptide affinity purification.

Target Details

Target:	DLL3
Alternative Name:	DLL3 (DLL3 Products)

Target Details

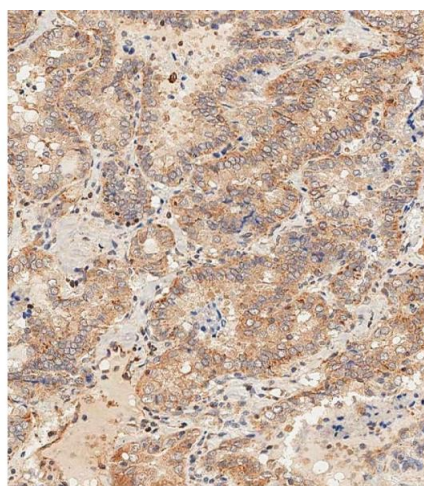
Background:	This gene encodes a member of the delta protein ligand family. This family functions as Notch ligands that are characterized by a DSL domain, EGF repeats, and a transmembrane domain. Mutations in this gene cause autosomal recessive spondylocostal dysostosis 1. Two transcript variants encoding distinct isoforms have been identified for this gene. [provided by RefSeq].
Molecular Weight:	64618
Gene ID:	10683
NCBI Accession:	NP_058637 , NP_982353
UniProt:	Q9NYJ7
Pathways:	Notch Signaling

Application Details

Application Notes:	IF: 1:10~50. WB: 1:1000. WB: 1:2000. WB: 1:1000. IHC-P-Leica: 1:500. IHC-P-Leica: 1:500
Restrictions:	For Research Use only

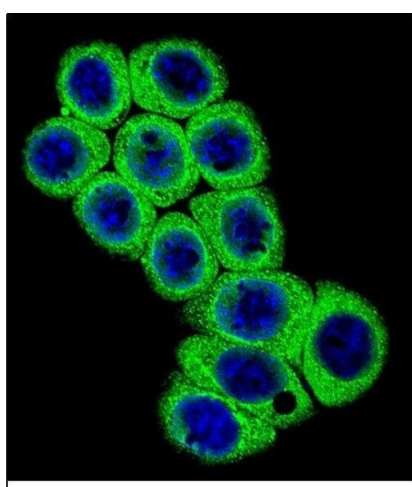
Handling

Format:	Liquid
Buffer:	Purified polyclonal antibody supplied in PBS with 0.09 % (W/V) sodium azide.
Preservative:	Sodium azide
Precaution of Use:	This product contains Sodium azide: a POISONOUS AND HAZARDOUS SUBSTANCE which should be handled by trained staff only.
Storage:	4 °C,-20 °C
Storage Comment:	DLL3 Antibody (C-term) can be refrigerated at 2-8 °C for up to 6 months. For long term storage, place the at -20 °C.
Expiry Date:	6 months



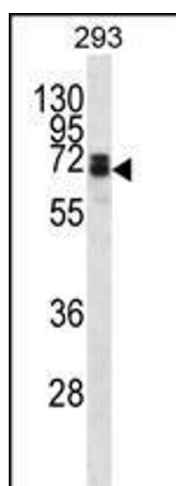
Immunohistochemistry (Paraffin-embedded Sections)

Image 1. Immunohistochemical analysis of paraffin-embedded Human thyroid carcinoma tissue using B performed on the Leica® BOND RXm. Tissue was fixed with formaldehyde at room temperature, antigen retrieval was by heat mediation with a EDTA buffer (pH 9.0). Samples were incubated with primary Antibody (1:500) for 1 hours at room temperature. A undiluted biotinylated CRF Anti-Polyvalent HRP Polymer antibody was used as the secondary antibody.



Immunofluorescence

Image 2. Confocal immunofluorescent analysis of DLL3 Antibody (C-term) (ABIN656327 and ABIN2845626) with 293 cell followed by Alexa Fluor 488-conjugated goat anti-rabbit IgG (green). DI was used to stain the cell nuclear (blue).



Western Blotting

Image 3. DLL3 Antibody (C-term) (ABIN656327 and ABIN2845626) western blot analysis in 293 cell line lysates (35 µg/lane). This demonstrates the DLL3 antibody detected the DLL3 protein (arrow).

Please check the [product details page](#) for more images. Overall 6 images are available for ABIN656327.