

Datasheet for ABIN656330  
**anti-Cyclin L2 antibody (AA 338-366)**[Go to Product page](#)

## 1 Image

## Overview

|                      |  |
|----------------------|--|
| Quantity:            | 400 µL                                   |
| Target:              | Cyclin L2 (CCNL2)                        |
| Binding Specificity: | AA 338-366                               |
| Reactivity:          | Human                                    |
| Host:                | Rabbit                                   |
| Clonality:           | Polyclonal                               |
| Conjugate:           | This Cyclin L2 antibody is un-conjugated |
| Application:         | Western Blotting (WB)                    |

## Product Details

|               |   |
|---------------|---|
| Immunogen:    | This CCNL2 antibody is generated from rabbits immunized with a KLH conjugated synthetic peptide between 338-366 amino acids from the Central region of human CCNL2. |
| Clone:        | RB31365   |
| Isotype:      | IgG   |
| Purification: | This antibody is purified through a protein A column, followed by peptide affinity purification.  |

## Target Details

|                   |   |
|-------------------|---|
| Target:           | Cyclin L2 (CCNL2)   |
| Alternative Name: | CCNL2 ( <a href="#">CCNL2 Products</a> )  |
| Background:       | CCNL2 is a transcriptional regulator which participates in regulating the pre-mRNA splicing |

## Target Details

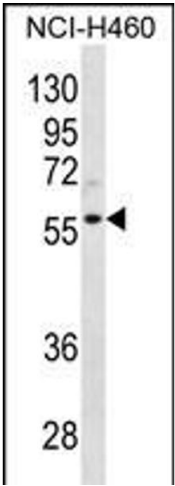
|                   |   |
|-------------------|---|
|                   | process. Also modulates the expression of critical apoptotic factor, leading to cell apoptosis. |
| Molecular Weight: | 58147   |
| Gene ID:          | 81669   |
| NCBI Accession:   | <a href="#">NP_001034666</a> , <a href="#">NP_112199</a>  |
| UniProt:          | <a href="#">Q96S94</a>  |

## Application Details

|                    |                       |
|--------------------|-----------------------|
| Application Notes: | WB: 1:1000            |
| Restrictions:      | For Research Use only |

## Handling

|                    |  |
|--------------------|--|
| Format:            | Liquid   |
| Buffer:            | Purified polyclonal antibody supplied in PBS with 0.09 % (W/V) sodium azide.   |
| Preservative:      | Sodium azide   |
| Precaution of Use: | This product contains Sodium azide: a POISONOUS AND HAZARDOUS SUBSTANCE which should be handled by trained staff only. |
| Storage:           | 4 °C,-20 °C  |
| Storage Comment:   | CCNL2 Antibody (Center) can be refrigerated at 2-8 °C for up to 6 months. For long term storage, place the at -20 °C.  |
| Expiry Date:       | 6 months   |



Western Blotting

**Image 1.** CCNL2 Antibody (Center) (ABIN656330 and ABIN2845629) western blot analysis in NCI- cell line lysates (35 µg/lane).This demonstrates the CCNL2 antibody detected the CCNL2 protein (arrow).