



[Go to Product page](#)

Datasheet for ABIN656331

anti-SLC16A3 antibody (C-Term)

6 Images

Overview

Quantity:	400 µL
Target:	SLC16A3
Binding Specificity:	AA 433-462, C-Term
Reactivity:	Human, Rat, Mouse
Host:	Rabbit
Clonality:	Polyclonal
Conjugate:	This SLC16A3 antibody is un-conjugated
Application:	Western Blotting (WB), Immunohistochemistry (Paraffin-embedded Sections) (IHC (p))

Product Details

Immunogen:	This SLC16A3 antibody is generated from rabbits immunized with a KLH conjugated synthetic peptide between 433-462 amino acids from the C-terminal region of human SLC16A3.
Clone:	RB31368
Isotype:	Ig Fraction
Predicted Reactivity:	Rat
Purification:	This antibody is purified through a protein A column, followed by peptide affinity purification.

Target Details

Target:	SLC16A3
Alternative Name:	SLC16A3 (SLC16A3 Products)

Target Details

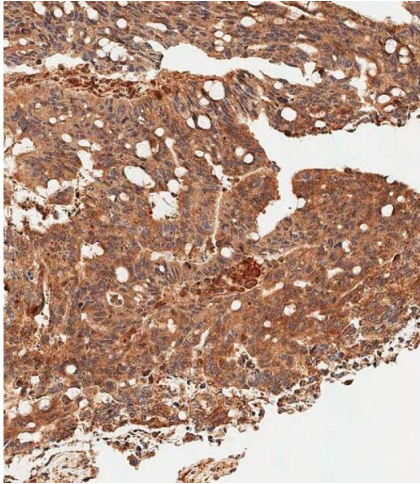
Background:	Lactic acid and pyruvate transport across plasma membranes is catalyzed by members of the proton-linked monocarboxylate transporter (MCT) family, which has been designated solute carrier family-16. Each MCT appears to have slightly different substrate and inhibitor specificities and transport kinetics, which are related to the metabolic requirements of the tissues in which it is found. The MCTs, which include MCT1 (SLC16A1, MIM 600682) and MCT2 (SLC16A7, MIM 603654), are characterized by 12 predicted transmembrane domains (Price et al., 1998 [PubMed 9425115]).
Molecular Weight:	49469
Gene ID:	9123
NCBI Accession:	NP_001035887 , NP_001035888 , NP_001193879 , NP_001193880 , NP_001193881 , NP_004198
UniProt:	O15427
Pathways:	Warburg Effect

Application Details

Application Notes:	WB: 1:2000. WB: 1:1000-1:2000. WB: 1:1000. WB: 1:1000. IHC-P-Leica: 1:500. IHC-P-Leica: 1:500
Restrictions:	For Research Use only

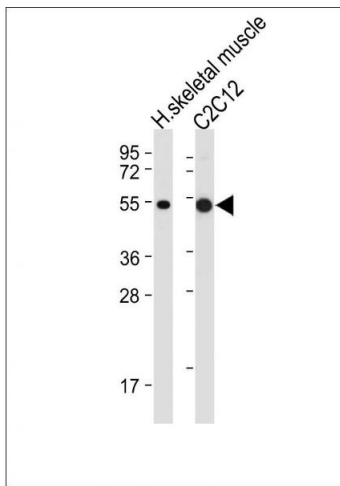
Handling

Format:	Liquid
Buffer:	Purified polyclonal antibody supplied in PBS with 0.09 % (W/V) sodium azide.
Preservative:	Sodium azide
Precaution of Use:	This product contains Sodium azide: a POISONOUS AND HAZARDOUS SUBSTANCE which should be handled by trained staff only.
Storage:	4 °C,-20 °C
Storage Comment:	SLC16A3 Antibody (C-term) can be refrigerated at 2-8 °C for up to 6 months. For long term storage, place the at -20 °C.
Expiry Date:	6 months



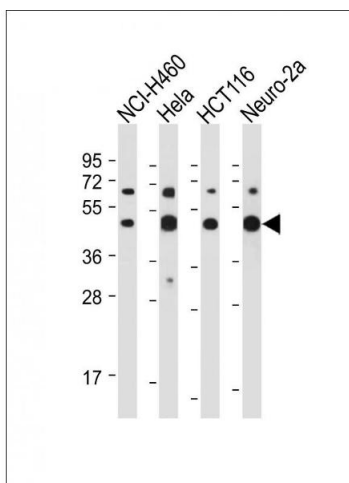
Immunohistochemistry (Paraffin-embedded Sections)

Image 1. Immunohistochemical analysis of paraffin-embedded Human colon carcinoma tissue using (ABIN656331 and ABIN2845630) performed on the Leica® BOND RXm. Tissue was fixed with formaldehyde at room temperature, antigen retrieval was by heat mediation with a EDTA buffer (pH 9.0). Samples were incubated with primary Antibody (1:500) for 1 hours at room temperature. A undiluted biotinylated CRF Anti-Polyvalent HRP Polymer antibody was used as the secondary antibody.



Western Blotting

Image 2. All lanes : Anti-SLC16A3 Antibody (C-term) at 1:2000 dilution Lane 1: Human skeletal muscle tissue lysate Lane 2: C2C12 whole cell lysate Lysates/proteins at 20 µg per lane. Secondary Goat Anti-Rabbit IgG, (H+L), Peroxidase conjugated at 1/10000 dilution. Predicted band size : 49 kDa Blocking/Dilution buffer: 5 % NFDm/TBST.



Western Blotting

Image 3. All lanes : Anti-SLC16A3 Antibody (C-term) at 1:1000-1:2000 dilution Lane 1: NCI- whole cell lysate Lane 2: HeLa whole cell lysate Lane 3: HC whole cell lysate Lane 4: Neuro-2a whole cell lysate Lysates/proteins at 20 µg per lane. Secondary Goat Anti-Rabbit IgG, (H+L), Peroxidase conjugated at 1/10000 dilution. Predicted band size : 49 kDa Blocking/Dilution buffer: 5 % NFDm/TBST.

Please check the [product details page](#) for more images. Overall 6 images are available for ABIN656331.