



[Go to Product page](#)

Datasheet for ABIN656349

## anti-TCF7L2 antibody (N-Term)

### 3 Images

#### Overview

Quantity:	400 µL
Target:	TCF7L2
Binding Specificity:	AA 61-90, N-Term
Reactivity:	Human, Mouse
Host:	Rabbit
Clonality:	Polyclonal
Conjugate:	This TCF7L2 antibody is un-conjugated
Application:	Western Blotting (WB)

#### Product Details

Immunogen:	This TCF7L2 antibody is generated from rabbits immunized with a KLH conjugated synthetic peptide between 61-90 amino acids from the N-terminal region of human TCF7L2.
Clone:	RB19650
Isotype:	Ig Fraction
Purification:	This antibody is purified through a protein A column, followed by peptide affinity purification.

#### Target Details

Target:	TCF7L2
Alternative Name:	TCF7L2 ( <a href="#">TCF7L2 Products</a> )
Background:	This gene encodes a high mobility group (HMG) box-containing transcription factor that plays a

## Target Details

---

key role in the Wnt signaling pathway. The protein has been implicated in blood glucose homeostasis. Genetic variants of this gene are associated with increased risk of type 2 diabetes. Several transcript variants encoding multiple different isoforms have been found for this gene.

Molecular Weight: 67919

Gene ID: 6934

NCBI Accession: [NP\\_001139746](#), [NP\\_001139755](#), [NP\\_001139756](#)

UniProt: [Q9NQB0](#)

Pathways: [WNT Signaling](#), [Positive Regulation of Peptide Hormone Secretion](#), [Peptide Hormone Metabolism](#), [Regulation of Hormone Metabolic Process](#), [Carbohydrate Homeostasis](#), [Stem Cell Maintenance](#), [Protein targeting to Nucleus](#)

## Application Details

---

Application Notes: WB: 1:2000. WB: 1:2000. WB: 1:1000

Restrictions: For Research Use only

## Handling

---

Format: Liquid

Buffer: Purified polyclonal antibody supplied in PBS with 0.09 % (W/V) sodium azide.

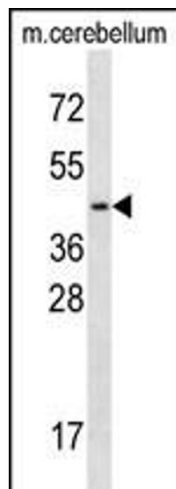
Preservative: Sodium azide

Precaution of Use: This product contains Sodium azide: a POISONOUS AND HAZARDOUS SUBSTANCE which should be handled by trained staff only.

Storage: 4 °C,-20 °C

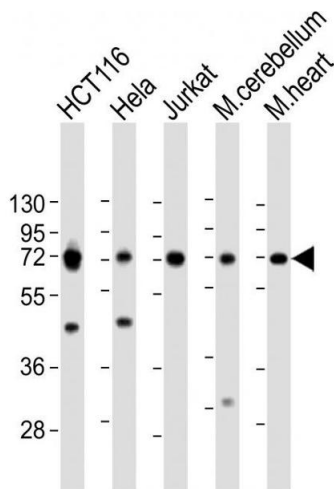
Storage Comment: TCF7L2 Antibody (N-term) can be refrigerated at 2-8 °C for up to 6 months. For long term storage, place the at -20 °C.

Expiry Date: 6 months



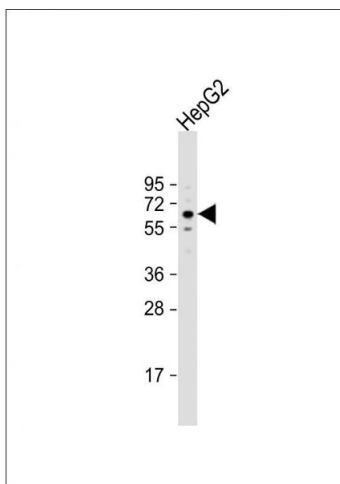
### Western Blotting

**Image 1.** TCF7L2 Antibody (N-term) (ABIN656349 and ABIN2845648) western blot analysis in mouse cerebellum tissue lysates (35 µg/lane). This demonstrates the TCF7L2 antibody detected the TCF7L2 protein (arrow).



### Western Blotting

**Image 2.** All lanes : Anti-TCF7L2 Antibody (N-term) at 1:2000 dilution Lane 1: HC whole cell lysate Lane 2: HeLa whole cell lysate Lane 3: Jurkat whole cell lysate Lane 4: mouse cerebellum lysate Lane 5: mouse heart lysate Lysates/proteins at 20 µg per lane. Secondary Goat Anti-Rabbit IgG, (H+L), Peroxidase conjugated at 1/10000 dilution. Predicted band size : 68 kDa Blocking/Dilution buffer: 5 % NFDm/TBST.



### Western Blotting

**Image 3.** Anti-TCF7L2 Antibody (N-term) at 1:2000 dilution + HepG2 whole cell lysate Lysates/proteins at 20 µg per lane. Secondary Goat Anti-Rabbit IgG, (H+L), Peroxidase conjugated at 1/10000 dilution. Predicted band size : 68 kDa Blocking/Dilution buffer: 5 % NFDm/TBST.