

Datasheet for ABIN656352
anti-SPATA7 antibody (C-Term)[Go to Product page](#)

1 Image

Overview

Quantity:	400 µL
Target:	SPATA7
Binding Specificity:	AA 374-401, C-Term
Reactivity:	Human
Host:	Rabbit
Clonality:	Polyclonal
Conjugate:	This SPATA7 antibody is un-conjugated
Application:	Western Blotting (WB)

Product Details

Immunogen:	This SPATA7 antibody is generated from rabbits immunized with a KLH conjugated synthetic peptide between 374-401 amino acids from the C-terminal region of human SPATA7.
Clone:	RB22300
Isotype:	Ig Fraction
Purification:	This antibody is purified through a protein A column, followed by peptide affinity purification.

Target Details

Target:	SPATA7
Alternative Name:	SPATA7 (SPATA7 Products)
Background:	This gene, originally isolated from testis, is also expressed in retina. Mutations in this gene are

Target Details

associated with Leber congenital amaurosis and juvenile retinitis pigmentosa. Alternatively spliced transcript variants encoding different isoforms have been found for this gene.

Molecular Weight: 67719

Gene ID: 55812

NCBI Accession: [NP_001035518](#), [NP_060888](#)

UniProt: [Q9P0W8](#)

Application Details

Application Notes: WB: 1:1000

Restrictions: For Research Use only

Handling

Format: Liquid

Buffer: Purified polyclonal antibody supplied in PBS with 0.09 % (W/V) sodium azide.

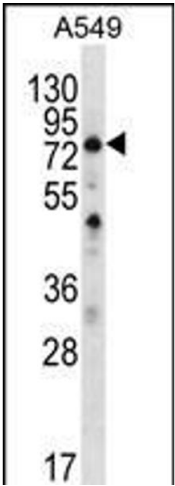
Preservative: Sodium azide

Precaution of Use: This product contains Sodium azide: a POISONOUS AND HAZARDOUS SUBSTANCE which should be handled by trained staff only.

Storage: 4 °C, -20 °C

Storage Comment: SPATA7 Antibody (C-term) can be refrigerated at 2-8 °C for up to 6 months. For long term storage, place the at -20 °C.

Expiry Date: 6 months



Western Blotting

Image 1. STA7 Antibody (C-term) (ABIN656352 and ABIN2845651) western blot analysis in A549 cell line lysates (35 µg/lane). This demonstrates the STA7 antibody detected the STA7 protein (arrow).