

Datasheet for ABIN656359  
**anti-VPS37B antibody (AA 99-127)**[Go to Product page](#)

## 2 Images

## Overview

Quantity:	400 µL
Target:	VPS37B
Binding Specificity:	AA 99-127
Reactivity:	Human
Host:	Rabbit
Clonality:	Polyclonal
Conjugate:	This VPS37B antibody is un-conjugated
Application:	Western Blotting (WB), Flow Cytometry (FACS)

## Product Details

Immunogen:	This VPS37B antibody is generated from rabbits immunized with a KLH conjugated synthetic peptide between 99-127 amino acids from the Central region of human VPS37B.
Clone:	RB27193
Isotype:	Ig Fraction
Predicted Reactivity:	M
Purification:	This antibody is purified through a protein A column, followed by peptide affinity purification.

## Target Details

Target:	VPS37B
Alternative Name:	VPS37B ( <a href="#">VPS37B Products</a> )

## Target Details

Background: VPS37B is component of the ESCRT-I complex, a regulator of vesicular trafficking process. Required for the sorting of endocytic ubiquitinated cargos into multivesicular bodies. May be involved in cell growth and differentiation.

Molecular Weight: 31307

Gene ID: 79720

NCBI Accession: [NP\\_078943](#)

UniProt: [Q9H9H4](#)

## Application Details

Application Notes: WB: 1:1000. FC: 1:10~50

Restrictions: For Research Use only

## Handling

Format: Liquid

Buffer: Purified polyclonal antibody supplied in PBS with 0.09 % (W/V) sodium azide.

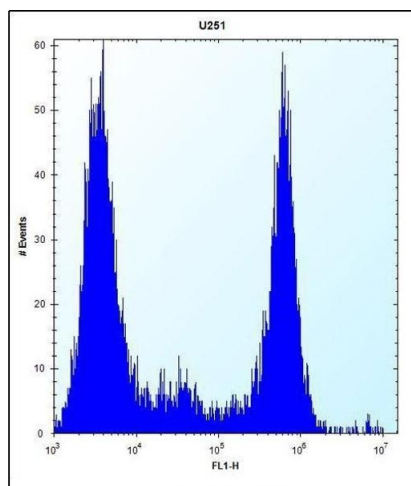
Preservative: Sodium azide

Precaution of Use: This product contains Sodium azide: a POISONOUS AND HAZARDOUS SUBSTANCE which should be handled by trained staff only.

Storage: 4 °C, -20 °C

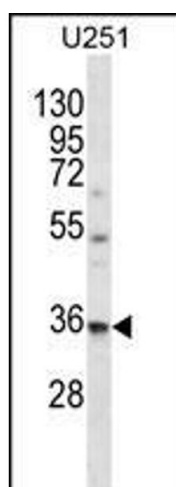
Storage Comment: VPS37B Antibody (Center) can be refrigerated at 2-8 °C for up to 6 months. For long term storage, place the at -20 °C.

Expiry Date: 6 months



### Flow Cytometry

**Image 1.** VPS37B Antibody (Center) 12426c flow cytometric analysis of cells (right histogram) compared to a negative control cell (left histogram). FITC-conjugated goat-anti-rabbit secondary antibodies were used for the analysis.



### Western Blotting

**Image 2.** VPS37B Antibody (Center) (ABIN656359 and ABIN2845656) western blot analysis in cell line lysates (35  $\mu$ g/lane). This demonstrates the VPS37B antibody detected the VPS37B protein (arrow).