

Datasheet for ABIN656360
anti-SMAP2 antibody (AA 111-140)[Go to Product page](#)

2 Images

Overview

Quantity:	400 µL
Target:	SMAP2
Binding Specificity:	AA 111-140
Reactivity:	Human
Host:	Rabbit
Clonality:	Polyclonal
Conjugate:	This SMAP2 antibody is un-conjugated
Application:	Western Blotting (WB), Immunohistochemistry (Paraffin-embedded Sections) (IHC (p))

Product Details

Immunogen:	This SMAP2 antibody is generated from rabbits immunized with a KLH conjugated synthetic peptide between 111-140 amino acids from the Central region of human SMAP2.
Clone:	RB27373
Isotype:	Ig Fraction
Purification:	This antibody is purified through a protein A column, followed by peptide affinity purification.

Target Details

Target:	SMAP2
Alternative Name:	SMAP2 (SMAP2 Products)
Background:	SMAP2 is a GTPase activating protein that acts on ARF1. Can also activate ARF6 (in vitro). May

Target Details

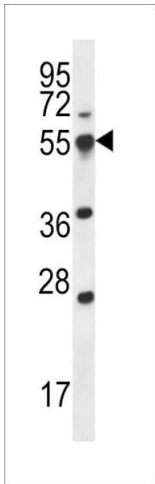
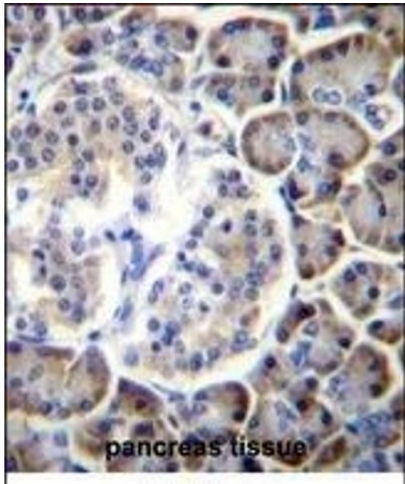
	play a role in clathrin-dependent retrograde transport from early endosomes to the trans-Golgi network (By similarity).
Molecular Weight:	46786
Gene ID:	64744
NCBI Accession:	NP_001185907 , NP_001185908 , NP_001185909 , NP_073570
UniProt:	Q8WU79

Application Details

Application Notes:	WB: 1:1000. IHC-P: 1:10~50
Restrictions:	For Research Use only

Handling

Format:	Liquid
Buffer:	Purified polyclonal antibody supplied in PBS with 0.09 % (W/V) sodium azide.
Preservative:	Sodium azide
Precaution of Use:	This product contains Sodium azide: a POISONOUS AND HAZARDOUS SUBSTANCE which should be handled by trained staff only.
Storage:	4 °C,-20 °C
Storage Comment:	SMAP2 Antibody (Center) can be refrigerated at 2-8 °C for up to 6 months. For long term storage, place the at -20 °C.
Expiry Date:	6 months



Immunohistochemistry (Paraffin-embedded Sections)

Image 1. SP2 Antibody (Center) (ABIN656360 and ABIN2845657) immunohistochemistry analysis in forlin fixed and paraffin embedded hun pancreas tissue followed by peroxidase conjugation of the secondary antibody and DAB staining.This data demonstrates the use of SP2 Antibody (Center) for immunohistochemistry. Clinical relevance has not been evaluated.

Western Blotting

Image 2. SP2 Antibody (Center) (ABIN656360 and ABIN2845657) western blot analysis in 293 cell line lysates (35 µg/lane).This demonstrates the SP2 antibody detected the SP2 protein (arrow).