

Datasheet for ABIN656361
anti-TBCEL antibody (C-Term)[Go to Product page](#)

2 Images

Overview

Quantity:	400 µL
Target:	TBCEL
Binding Specificity:	AA 385-413, C-Term
Reactivity:	Human
Host:	Rabbit
Clonality:	Polyclonal
Conjugate:	This TBCEL antibody is un-conjugated
Application:	Western Blotting (WB), Immunohistochemistry (Paraffin-embedded Sections) (IHC (p))

Product Details

Immunogen:	This TBCEL antibody is generated from rabbits immunized with a KLH conjugated synthetic peptide between 385-413 amino acids from the C-terminal region of human TBCEL.
Clone:	RB27388
Isotype:	Ig Fraction
Predicted Reactivity:	M
Purification:	This antibody is purified through a protein A column, followed by peptide affinity purification.

Target Details

Target:	TBCEL
Alternative Name:	TBCEL (TBCEL Products)

Target Details

Background:	TBCEL acts as a regulator of tubulin stability.
Gene ID:	219899
NCBI Accession:	NP_001123519 , NP_689928
UniProt:	Q5QJ74

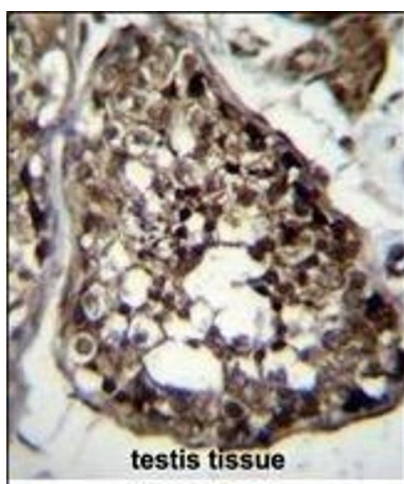
Application Details

Application Notes:	WB: 1:1000. IHC-P: 1:10~50
Restrictions:	For Research Use only

Handling

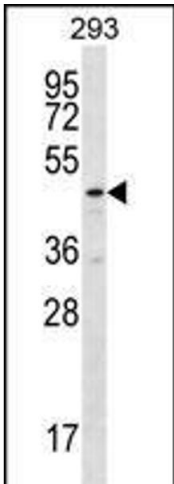
Format:	Liquid
Buffer:	Purified polyclonal antibody supplied in PBS with 0.09 % (W/V) sodium azide.
Preservative:	Sodium azide
Precaution of Use:	This product contains Sodium azide: a POISONOUS AND HAZARDOUS SUBSTANCE which should be handled by trained staff only.
Storage:	4 °C, -20 °C
Storage Comment:	TBCEL Antibody (C-term) can be refrigerated at 2-8 °C for up to 6 months. For long term storage, place the at -20 °C.
Expiry Date:	6 months

Images



Immunohistochemistry (Paraffin-embedded Sections)

Image 1. TBCEL Antibody (C-term) (ABIN656361 and ABIN2845658) immunohistochemistry analysis in formalin fixed and paraffin embedded human testis tissue followed by peroxidase conjugation of the secondary antibody and DAB staining. This data demonstrates the use of TBCEL Antibody (C-term) for immunohistochemistry. Clinical relevance has not been evaluated.



Western Blotting

Image 2. TBCEL Antibody (C-term) (ABIN656361 and ABIN2845658) western blot analysis in 293 cell line lysates (35 µg/lane). This demonstrates the TBCEL antibody detected the TBCEL protein (arrow).