

Datasheet for ABIN656372
anti-Phosducin antibody (AA 59-88)[Go to Product page](#)

1 Image

Overview

Quantity:	400 µL
Target:	Phosducin (PDC)
Binding Specificity:	AA 59-88
Reactivity:	Human
Host:	Rabbit
Clonality:	Polyclonal
Conjugate:	This Phosducin antibody is un-conjugated
Application:	Western Blotting (WB)

Product Details

Immunogen:	This PDC antibody is generated from rabbits immunized with a KLH conjugated synthetic peptide between 59-88 amino acids from the Central region of human PDC.
Clone:	RB31115
Isotype:	Ig Fraction
Purification:	This antibody is purified through a protein A column, followed by peptide affinity purification.

Target Details

Target:	Phosducin (PDC)
Alternative Name:	PDC (PDC Products)
Background:	This gene encodes a phosphoprotein, which is located in the outer and inner segments of the

Target Details

rod cells in the retina. This protein may participate in the regulation of visual phototransduction or in the integration of photoreceptor metabolism. It modulates the phototransduction cascade by interacting with the beta and gamma subunits of the retinal G-protein transducin. This gene is a potential candidate gene for retinitis pigmentosa and Usher syndrome type II. Alternatively spliced transcript variants encoding different isoforms have been identified.

Molecular Weight: 28246

Gene ID: 5132

NCBI Accession: [NP_002588](#), [NP_072098](#)

UniProt: [P20941](#)

Application Details

Application Notes: WB: 1:1000

Restrictions: For Research Use only

Handling

Format: Liquid

Buffer: Purified polyclonal antibody supplied in PBS with 0.09 % (W/V) sodium azide.

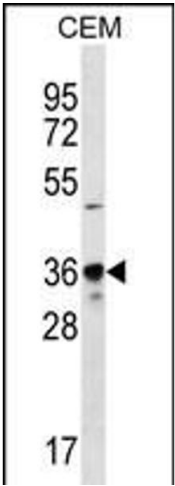
Preservative: Sodium azide

Precaution of Use: This product contains Sodium azide: a POISONOUS AND HAZARDOUS SUBSTANCE which should be handled by trained staff only.

Storage: 4 °C,-20 °C

Storage Comment: PDC Antibody (Center) can be refrigerated at 2-8 °C for up to 6 months. For long term storage, place the at -20 °C.

Expiry Date: 6 months



Western Blotting

Image 1. PDC Antibody (Center) (ABIN656372 and ABIN2845667) western blot analysis in CEM cell line lysates (35 µg/lane). This demonstrates the PDC antibody detected the PDC protein (arrow).