

Datasheet for ABIN656380  
**anti-MEIG1 antibody (AA 36-65)**[Go to Product page](#)

## 3 Images

## Overview

|                      |   |
|----------------------|---|
| Quantity:            | 400 µL  |
| Target:              | MEIG1   |
| Binding Specificity: | AA 36-65  |
| Reactivity:          | Human   |
| Host:                | Rabbit  |
| Clonality:           | Polyclonal  |
| Conjugate:           | This MEIG1 antibody is un-conjugated  |
| Application:         | Western Blotting (WB), Flow Cytometry (FACS), Immunohistochemistry (Paraffin-embedded Sections) (IHC (p)) |

## Product Details

|                       |   |
|-----------------------|---|
| Immunogen:            | This MEIG1 antibody is generated from rabbits immunized with a KLH conjugated synthetic peptide between 36-65 amino acids from the Central region of human MEIG1. |
| Clone:                | RB31235   |
| Isotype:              | Ig Fraction   |
| Predicted Reactivity: | B, M  |
| Purification:         | This antibody is purified through a protein A column, followed by peptide affinity purification.  |

## Target Details

|         |       |
|---------|-------|
| Target: | MEIG1 |
|---------|-------|

## Target Details

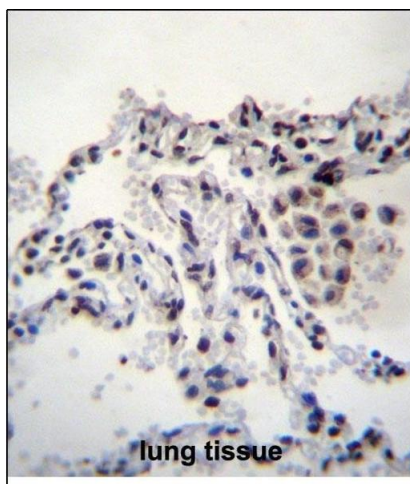
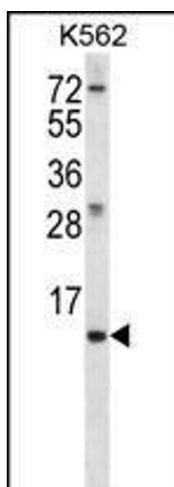
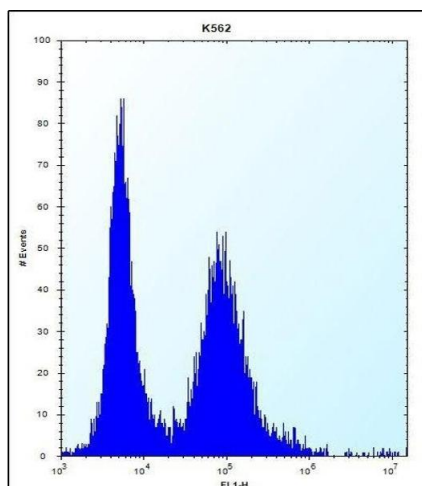
|                   |   |
|-------------------|---|
| Alternative Name: | MEIG1 ( <a href="#">MEIG1 Products</a> )                            |
| Background:       | MEIG1 may be involved in germ cell differentiation (By similarity). |
| Molecular Weight: | 10795   |
| Gene ID:          | 644890  |
| NCBI Accession:   | <a href="#">NP_001074305</a>  |
| UniProt:          | <a href="#">Q5JSS6</a>  |

## Application Details

|                    |   |
|--------------------|---|
| Application Notes: | WB: 1:1000. IHC-P: 1:10~50. FC: 1:10~50 |
| Restrictions:      | For Research Use only                   |

## Handling

|                    |  |
|--------------------|--|
| Format:            | Liquid   |
| Buffer:            | Purified polyclonal antibody supplied in PBS with 0.09 % (W/V) sodium azide.   |
| Preservative:      | Sodium azide   |
| Precaution of Use: | This product contains Sodium azide: a POISONOUS AND HAZARDOUS SUBSTANCE which should be handled by trained staff only. |
| Storage:           | 4 °C,-20 °C  |
| Storage Comment:   | MEIG1 Antibody (Center) can be refrigerated at 2-8 °C for up to 6 months. For long term storage, place the at -20 °C.  |
| Expiry Date:       | 6 months   |



### Flow Cytometry

**Image 1.** MEIG1 Antibody (Center) (ABIN656380 and ABIN2845675) flow cytometric analysis of K562 cells (right histogram) compared to a negative control cell (left histogram). FITC-conjugated donkey-anti-rabbit secondary antibodies were used for the analysis.

### Western Blotting

**Image 2.** MEIG1 Antibody (Center) (ABIN656380 and ABIN2845675) western blot analysis in K562 cell line lysates (35 µg/lane). This demonstrates the MEIG1 antibody detected the MEIG1 protein (arrow).

### Immunohistochemistry (Paraffin-embedded Sections)

**Image 3.** MEIG1 Antibody (Center) (ABIN656380 and ABIN2845675) immunohistochemistry analysis in formalin fixed and paraffin embedded human lung tissue followed by peroxidase conjugation of the secondary antibody and DAB staining. This data demonstrates the use of MEIG1 Antibody (Center) for immunohistochemistry. Clinical relevance has not been evaluated.